

WAAS CH <b>60907</b> <b>W35A</b>	APP CRS <b>348°</b>	Rwy ldg <b>5503</b> TDZE <b>1140</b> Apt Elev <b>1161</b>
--	------------------------	---

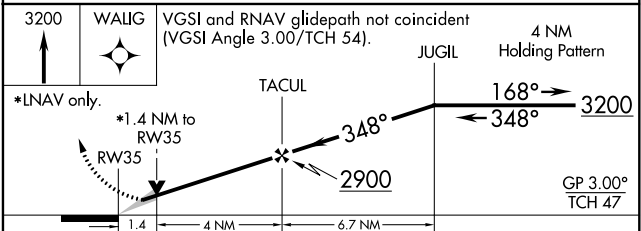
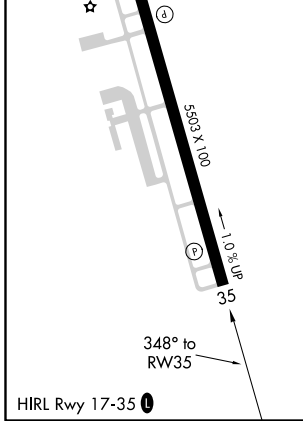
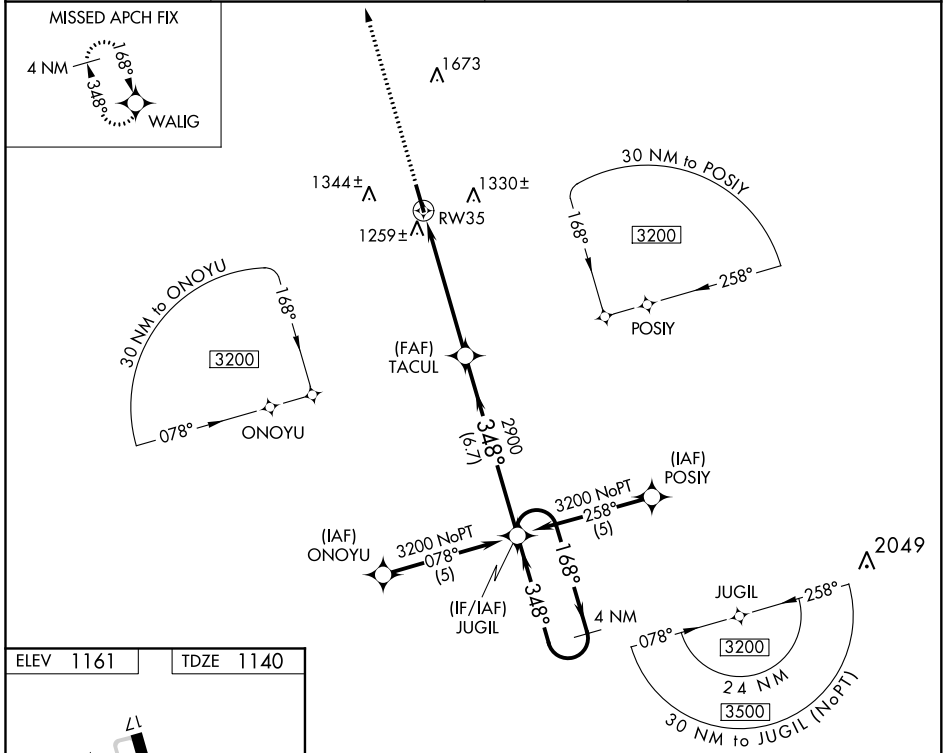
# RNAV (GPS) RWY 35

WEST GEORGIA RGNL-O V GRAY FLD (CTJ)

**⚠** When local altimeter setting not received, use Newnan Coweta County altimeter setting and increase DA to 1480 feet and all visibilities ¼ mile; increase all MDA 100 feet and LNAV Cat C and Circling Cat C visibilities ¼ mile. DME/DME RNP-0.3 NA. VDP NA when using Newnan Coweta County altimeter setting.

**MISSED APPROACH:**  
Climb to 3200 direct WALIG and hold.

AWOS-3 <b>118.175</b>	ATLANTA APP CON <b>121.0 268.7</b>	CLNC DEL <b>121.6</b>	UNICOM <b>122.975 (CTAF) 0</b>
--------------------------	---------------------------------------	--------------------------	-----------------------------------



CATEGORY	A	B	C	D
LPV DA	1390-1 250 (300-1)			
LNAV/VNAV DA	NA			
LNAV MDA	1580-1	440 (500-1)	1580-1¼ 440 (500-1¼)	1580-1½ 440 (500-1½)
CIRCLING	1660-1 499 (500-1)	1680-1 519 (600-1)	1680-1½ 519 (600-1½)	1720-2 559 (600-2)

SE-4, 09 SEP 2021 to 07 OCT 2021

SE-4, 09 SEP 2021 to 07 OCT 2021