

WAAS CH <b>50232</b> <b>W13A</b>	APP CRS <b>125°</b>	Rwy Idg TDZE Apt Elev	<b>5152</b> <b>358</b> <b>358</b>
--	------------------------	-----------------------------	---

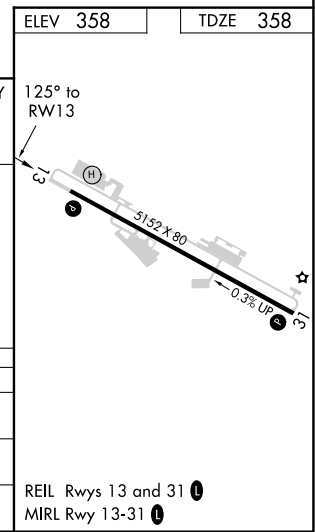
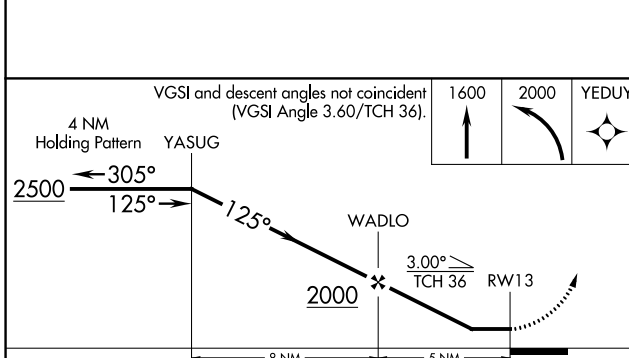
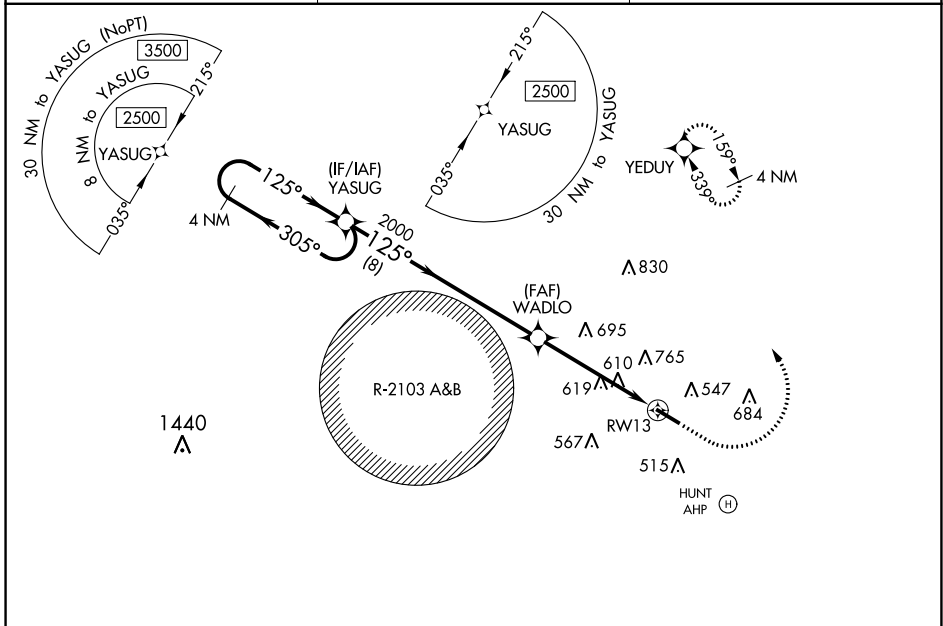
# RNAV (GPS) RWY 13

OZARK-BLACKWELL FIELD (71J)

RNP APCH: **▽** Use Dothan altimeter setting; when not received, use Cairns AAF altimeter setting. Procedure NA at night.  
**▲NA** Rwy 13 helicopter visibility reduction below 1 SM NA.

MISSED APPROACH: Climb to 1600 then climbing left turn to 2000 direct YEDUY and hold.

DHN ASOS <b>135.725</b>	CAIRNS APP CON ★ <b>125.4 327.125</b>	UNICOM <b>122.7 (CTAF) 0</b>
----------------------------	--	---------------------------------



CATEGORY	A		B		C		D		
	1	2	1	2	1	2	1	2	
LP MDA	900-1	542 (600-1)	900-1	542 (600-1)	900-1 5/8	542 (600-1 5/8)	900-1 3/4	602 (700-1 3/4)	NA
LNAV MDA	960-1	602 (700-1)	960-1	602 (700-1)	960-1 3/4	602 (700-1 3/4)	960-1 3/4	602 (700-1 3/4)	NA
CIRCLING	960-1	602 (700-1)	960-1	602 (700-1)	960-1 3/4	602 (700-1 3/4)	960-1 3/4	602 (700-1 3/4)	NA

SE-4, 09 SEP 2021 to 07 OCT 2021

SE-4, 09 SEP 2021 to 07 OCT 2021