

VORTAC RRS <b>111.6</b> Chan <b>53</b>	APP CRS <b>311°</b>	Rwy Idg <b>5152</b> TDZE <b>350</b> Apt Elev <b>358</b>
--	------------------------	---

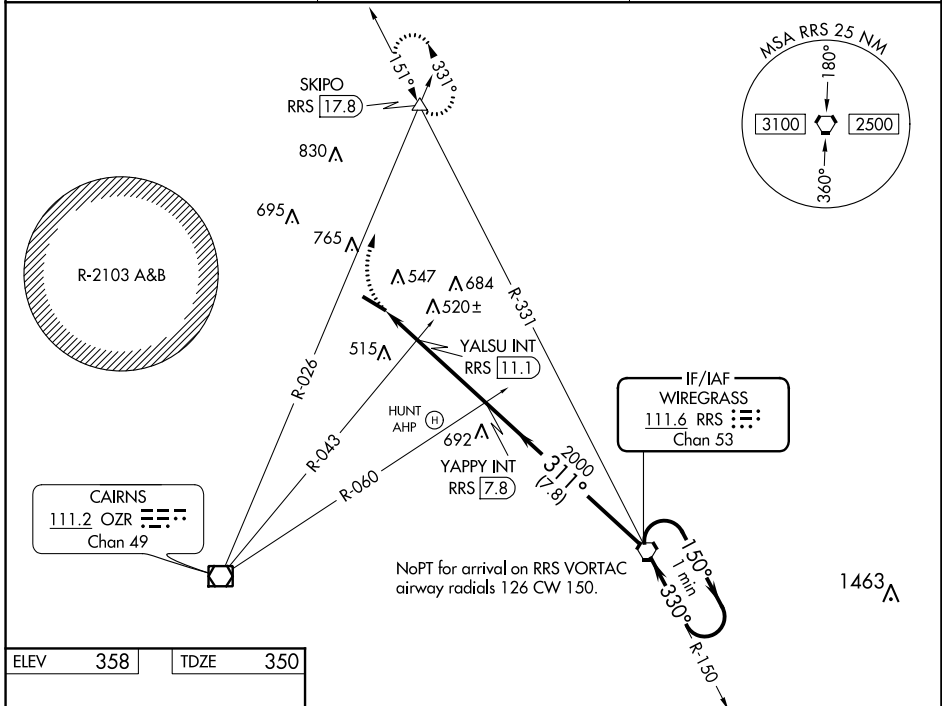
# VOR RWY 31

OZARK-BLACKWELL FIELD (71J)

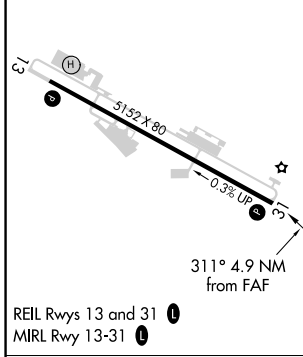
▼ Use Dothan altimeter setting; when not received, use Cairns AAF altimeter setting. Procedure NA at night.  
 ▲ NA Rwy 31 helicopter visibility reduction below 1 SM NA.

MISSED APPROACH: Climbing right turn to 2000 on OZR VOR/DME R-026 to SKIPO INT/RRS 17.8 DME and hold.

DHN ASOS <b>135.725</b>	CAIRNS APP CON ★ <b>125.4 327.125</b>	UNICOM <b>122.7 (CTAF)</b> <b>0</b>
----------------------------	--	--



ELEV	358	TDZE	350
------	-----	------	-----



2000	SKIPO	RRS VORTAC	One Minute Holding Pattern
OZR R-026	△		
	YALSU INT RRS (11.1)	YAPPY INT RRS (7.8)	
	RRS (12.7)	3.11° TCH 40	
	880	2000	2100
	1.6 NM	3.3 NM	7.8 NM

CATEGORY	A	B	C	D
S-31	880-1	530 (600-1)	880-1½ 530 (600-1½)	NA
CIRCLING	900-1	542 (600-1)	960-1¾ 602 (700-1¾)	NA
YALSU FIX MINIMUMS (DUAL VOR RECEIVERS OR DME REQUIRED)				
S-31	820-1	470 (500-1)	820-1¾ 470 (500-1¾)	NA
CIRCLING	900-1	542 (600-1)	960-1¾ 602 (700-1¾)	NA

FAF to MAP 4.9 NM					
Knots	60	90	120	150	180
Min:Sec	4:54	3:16	2:27	1:58	1:38

SE-4, 09 SEP 2021 to 07 OCT 2021

SE-4, 09 SEP 2021 to 07 OCT 2021