

WAAS CH 77815 W11A	APP CRS 103°	Rwy Idg TDZE Apt Elev	5500 107 107
--	------------------------	-----------------------------	---

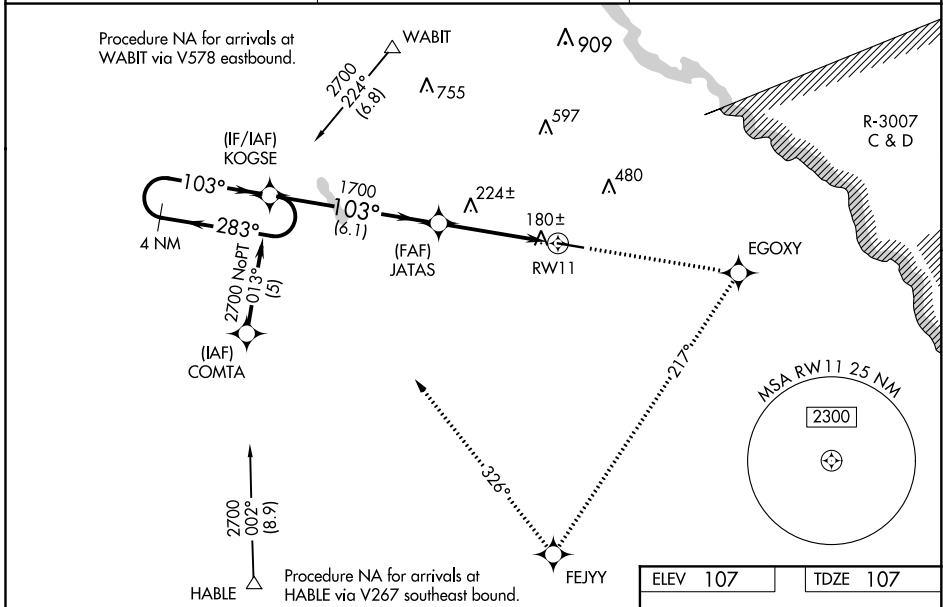
RNAV (GPS) RWY 11

JESUP-WAYNE COUNTY (JES)

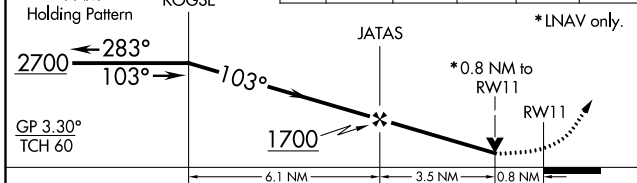
NA Baro-VNAV NA when using Savannah/Hilton Head Intl altimeter setting. For uncompensated Baro-VNAV systems, LNAV/VNAV NA below -1 5°C (5°F) or above 54°C (130°F). DME/DME RNP-0.3 NA. Helicopter visibility reduction below 1 statute mile NA. When local altimeter setting not received, use Savannah/Hilton Head Intl altimeter setting; increase LPV DA to 583, LNAV/VNAV DA to 597, and visibility LPV all Cats ½ SM and LNAV/VNAV all Cats ¼ SM; increase all MDAs 140 feet and visibility LNAV Cat C and Circling Cat C ½ SM. VDP NA when using Savannah/Hilton Head Intl altimeter setting.

MISSED APPROACH: Climb to 2700 direct EGOXY and right turn via track 217° to FEJYY and right turn via track 326° to KOGSE and hold.

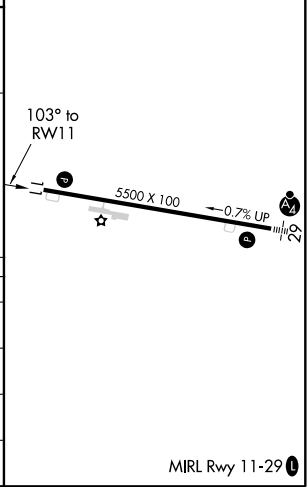
AWOS-3PT 118.125	JACKSONVILLE CENTER 126.75 277.4	UNICOM 122.8 (CTAF)
----------------------------	--	-------------------------------



VGSI and RNAV glidepath not coincident (VGSI Angle 3.75/TCH 47).	2700	EGOXY	FEJYY	KOGSE
	↑	tr 217°	tr 326°	



ELEV 107	TDZE 107
----------	----------



CATEGORY	A	B	C	D
LPV DA		462-1 355 (400-1)		NA
LNAV/VNAV DA		476-1¼ 369 (400-1¼)		NA
LNAV MDA		480-1 373 (400-1)		NA
CIRCLING	520-1 413 (500-1)	560-1 453 (500-1)	780-2 673 (700-2)	NA

SE-4, 09 SEP 2021 to 07 OCT 2021

SE-4, 09 SEP 2021 to 07 OCT 2021