

WAAS CH 56238 W27A	APP CRS 275°	Rwy Idg 4300 TDZE 976 Apt Elev 990
----------------------------------------	------------------------	---------------------------------------------------------------

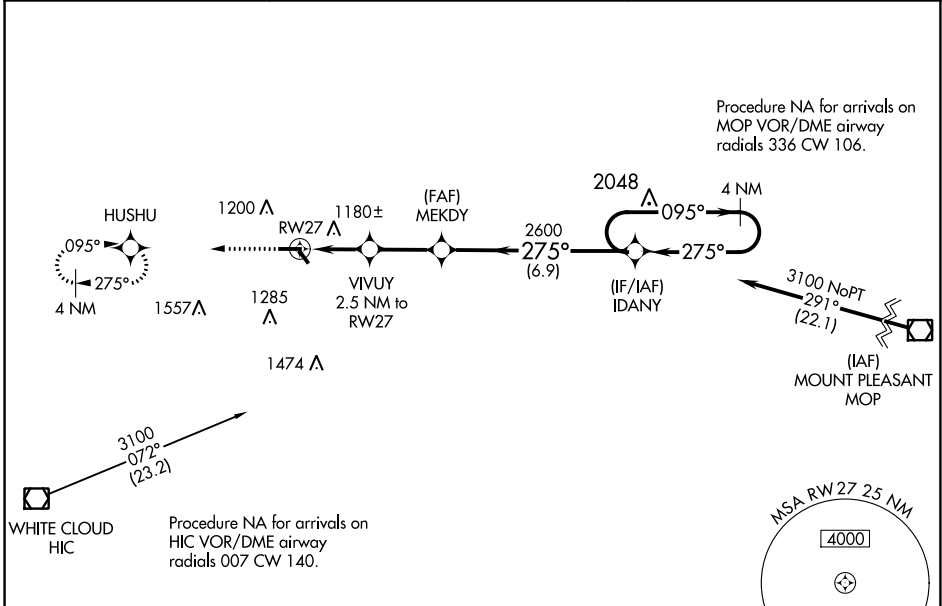
RNAV (GPS) RWY 27

ROBEN-HOOD (RQB)

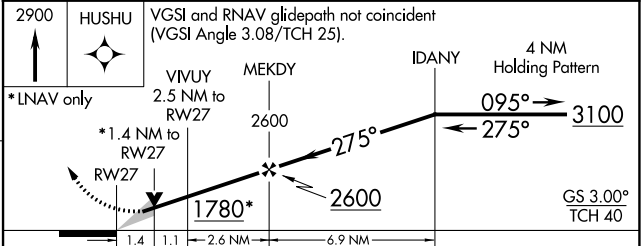
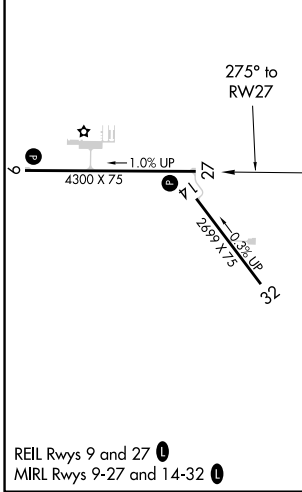
▼ For uncompensated Baro-VNAV systems, procedure NA below -16°C (4°F) or above 54°C (130°F).
▲ DME/DME RNP-0.3 NA. Night landing: Rwy 32 NA. Baro-VNAV and VDP NA when using Muskegon altimeter setting. When local altimeter setting is not received, use Muskegon altimeter setting and increase DA 1.57 feet and all visibilities ½ mile; increase all MDAs 160 feet, LNAV Cat C/D visibility and Circling Cat C ½ and Circling Cat D visibility ¼ mile.

MISSED APPROACH:
Climb to 2900 direct HUSHU and hold.

AWOS-3P 125.875	MINNEAPOLIS CENTER 120.85 322.35	UNICOM 122.8 (CTAF)
---------------------------	--------------------------------------------	-------------------------------



ELEV 990	TDZE 976
-----------------	-----------------



CATEGORY	A	B	C	D
LPV DA		1176-¾	200 (200-¾)	
LNAV/VNAV DA		1540-2	564 (600-2)	
LNAV MDA	1440-1	464 (500-1)	1440-1¾	464 (500-1¾)
C CIRCLING	1500-1 510 (600-1)	1560-1 570 (600-1)	1700-2 710 (800-2)	1860-2¾ 870 (900-2¾)

EC-1, 09 SEP 2021 to 07 OCT 2021

EC-1, 09 SEP 2021 to 07 OCT 2021