

LOC/DME I-DJK 109.95 Chan 36 (Y)	APP CRS 022°	Rwy Idg 7026 TDZE 913 Apt Elev 914
--	------------------------	---

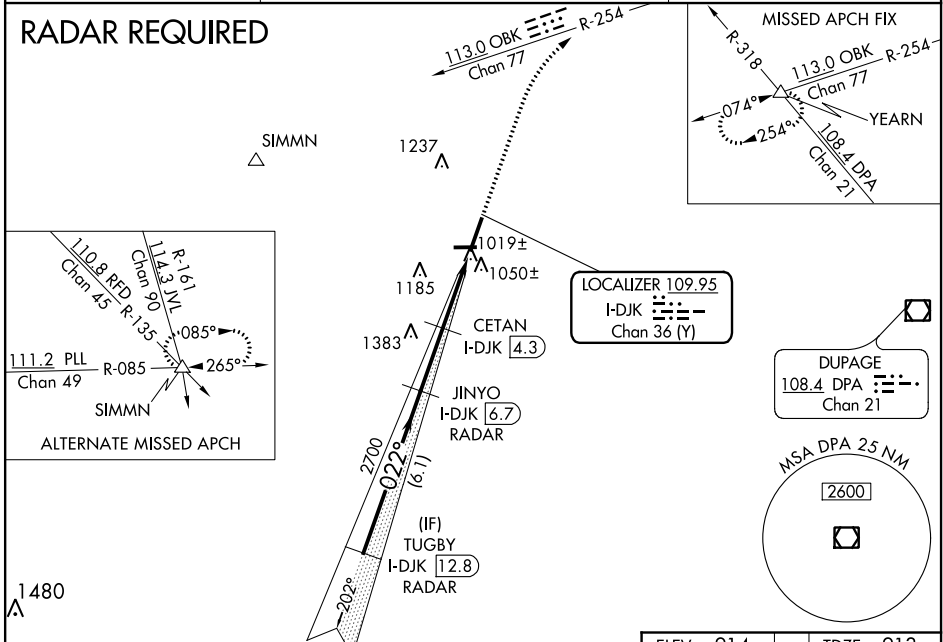
ILS or LOC RWY 2

DE KALB TAYLOR MUNI (DKB)

⚠ VDP NA when using Aurora altimeter setting. When local altimeter setting not received, use Aurora altimeter setting and increase all DA 61 feet and all MDA 80 feet, CETAN fix minimums increase Circling Cat C/D visibility ½ mile. For inoperative MALSR, increase S-ILS 2 all Cats visibility to ¾ mile. CETAN fix minimums: For inoperative MALSR, increase S-LOC 2 Cat C/D visibility to 1 mile.

MALSR
 MISSED APPROACH: Climb to 3000 on heading 022° and OBK VOR/DME R-254 to YEARN Int and hold.

AWOS-3 119.075	CHICAGO APP CON 133.5 349.0	UNICOM 122.7 (CTAF) 0
--------------------------	---------------------------------------	--



EC-3, 09 SEP 2021 to 07 OCT 2021

EC-3, 09 SEP 2021 to 07 OCT 2021

TUGBY I-DJK 12.8 RADAR	JINYO I-DJK 6.7 RADAR	CETAN I-DJK 4.3	OBK R-254	YEARN Δ
2700		2700	3000	hdg 022°
GS 3.00° TCH 55		*1900	*LOC only	
6.1 NM		2.4 NM	1.9 NM	1.1 NM
CATEGORY	A	B	C	D
S-ILS 2	1113-½		200 (200-½)	
S-LOC 2	1900-¾ 987 (1000-¾)	1900-1 987 (1000-1)	1900-2½	987 (1000-2½)
CIRCLING	1900-1¼ 986 (1000-1¼)	1900-1½ 986 (1000-1½)	1900-3	986 (1000-3)
CETAN FIX MINIMUMS				
S-LOC 2	1280-½ 446 (500-1)	367 (400-½)	1280-¾ 626 (700-¾)	367 (400-¾)
CIRCLING	1360-1 446 (500-1)	1480-1 566 (600-1)	1540-1¾ 626 (700-2)	1540-2 626 (700-2)

