

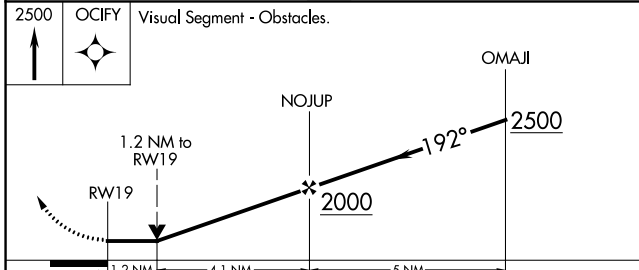
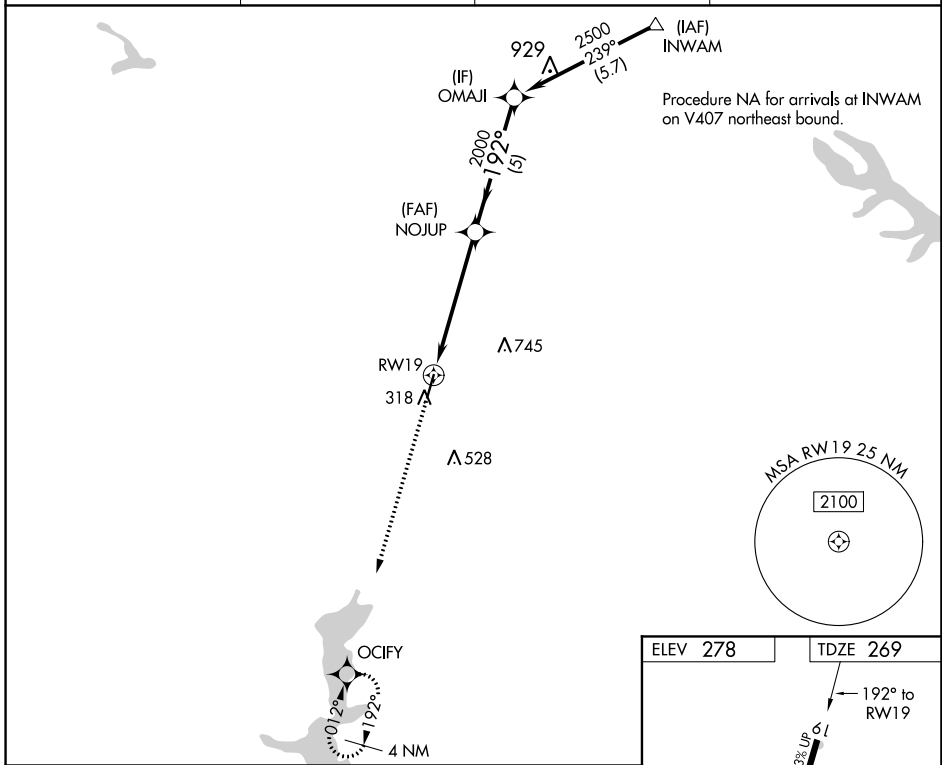
APP CRS	Rwy Idg	<b>5004</b>
<b>192°</b>	TDZE	<b>269</b>
	Apt Elev	<b>278</b>

# RNAV (GPS) RWY 19

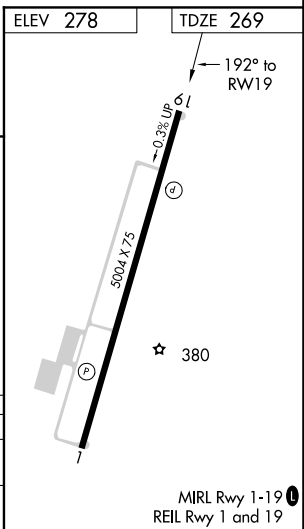
MINDEN (MNE)

RNP APCH.	<p><b>▽</b> Rwy 19 helicopter visibility reduction below 3/4 SM NA. Obtain local altimeter setting on CTAF; when not received, use Barksdale AFB altimeter setting and increase all MDA 80 feet; increase visibility LNAV Cats C and D and Circling Cat C to 1 3/4 SM.</p> <p><b>▲</b> MISSED APPROACH: Climb to 2500 direct OCIFY and hold.</p>

AWOS-3PT <b>119.325</b>	SHREVEPORT APP CON <b>123.75 360.725</b>	GCO <b>135.075</b>	UNICOM <b>122.8 (CTAF) 0</b>
----------------------------	---	-----------------------	---------------------------------



CATEGORY	A	B	C	D
LNAV MDA	820-1	551 (600-1)	820-1 5/8	551 (600-1 1/2)
CIRCLING	820-1	542 (600-1)	820-1 5/8	840-2 562 (600-2)



SC-4, 09 SEP 2021 to 07 OCT 2021

SC-4, 09 SEP 2021 to 07 OCT 2021