

VORTAC EIC <b>117.4</b> Chan 121	APP CRS <b>099°</b>	Rwy Idg TDZE Apt Elev <b>N/A</b> <b>N/A</b> <b>278</b>
--	------------------------	---

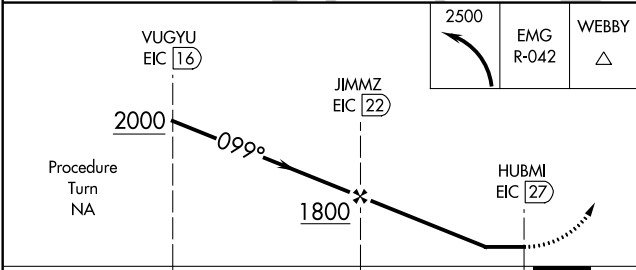
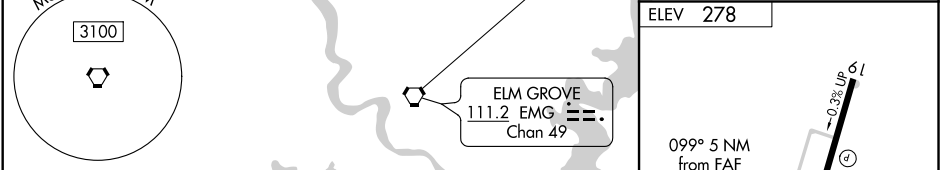
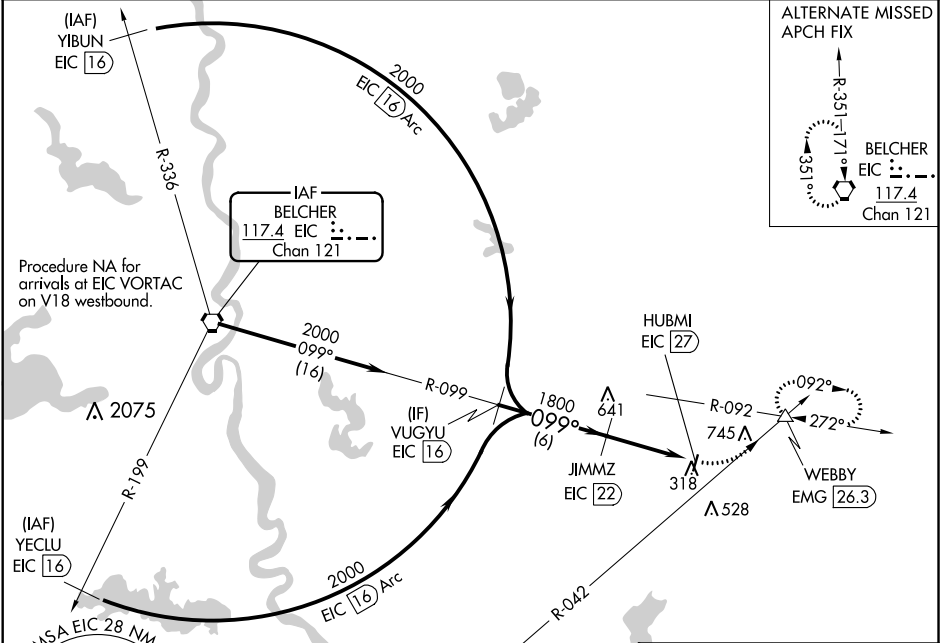
# VOR/DME-A

MINDEN (MNE)

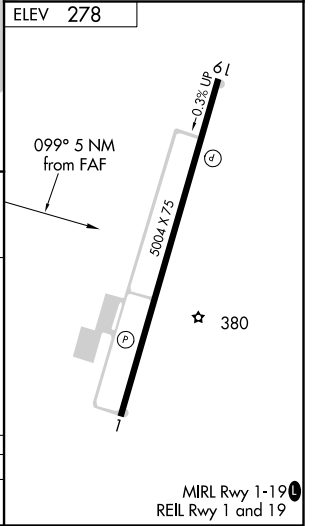
**⚠** When VGSI inoperative, procedure NA at night. When local altimeter setting not received, use Barksdale AFB altimeter setting. Visibility reduction by helicopters NA.

**⚠** MISSED APPROACH: Climbing left turn to 2500 and EMG VORTAC R-042 to WEBBY INT/EMG 26.3 DME and hold.

AWOS-3PT <b>119.325</b>	SHREVEPORT APP CON <b>123.75 360.725</b>	GCO <b>135.075</b>	UNICOM <b>122.8 (CTAF)</b>
----------------------------	---	-----------------------	-------------------------------



CATEGORY	A	B	C	D
<b>CIRCLING</b>	1540-1¼ 1262 (1300-1¼)	1540-1½ 1262 (1300-1½)	1540-3 1262 (1300-3)	



SC-4, 09 SEP 2021 to 07 OCT 2021

SC-4, 09 SEP 2021 to 07 OCT 2021

MIRL Rwy 1-19  
REIL Rwy 1 and 19