

WAAS CH 49121 W24A	APP CRS 242°	Rwy Idg TDZE 1448 Apt Elev 1448
--	------------------------	---

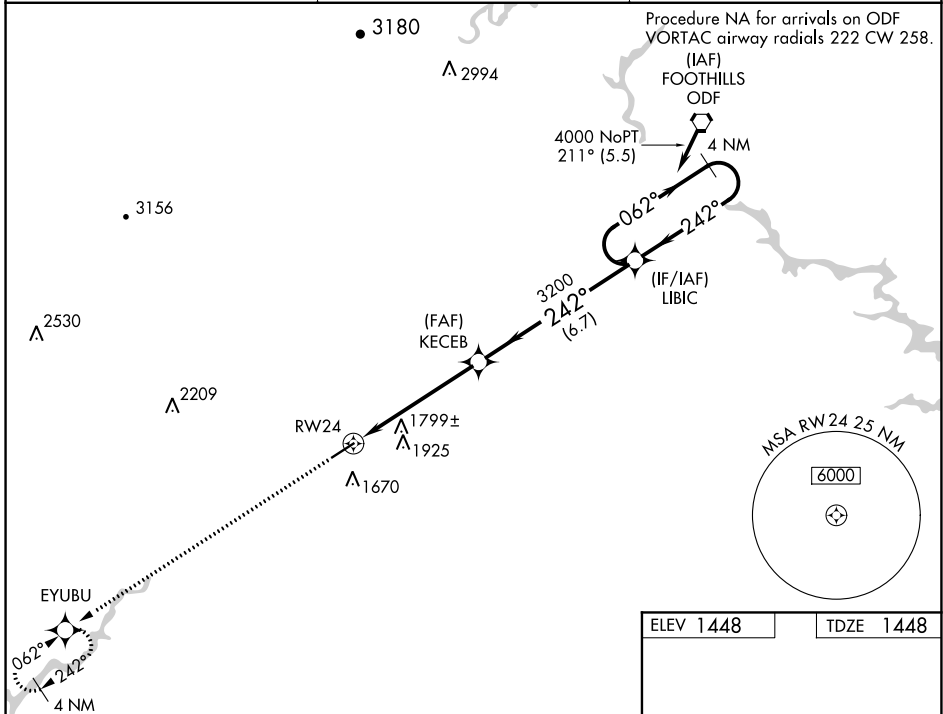
RNAV (GPS) RWY 24

HABERSHAM COUNTY (AJR)

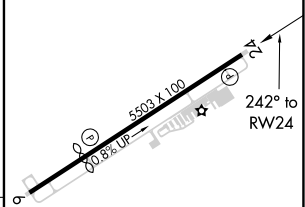
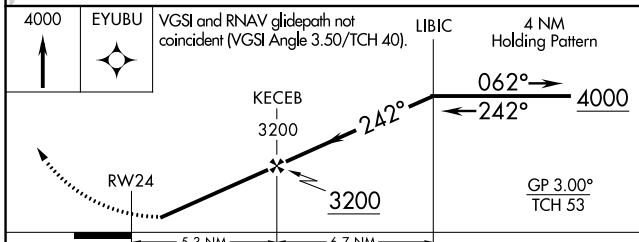
▼ DME/DME RNP-0.3 NA. Rwy 24 helicopter visibility reduction below 1 SM NA. When local altimeter setting not received use Gainesville altimeter setting and increase all DA 69 feet and all MDA 80 feet: increase visibility LPV and LNAV/VNAV all Cats ¼ mile, LNAV Cat C and D ½ mile, Circling Cat C and D ¼ mile. When VGSI inop, Straight-in/Circling Rwy 24 procedure NA at night. Baro-VNAV NA when using Gainesville altimeter setting. For uncompensated Baro-VNAV systems, LNAV/VNAV NA below -17°C (2°F) or above 34°C (93°F).

▲ NA MISSED APPROACH: Climb to 4000 direct EYUBU and hold.

AWOS-3 119.175	ATLANTA CENTER 134.8 379.95	UNICOM 122.7 (CTAF) 0
--------------------------	---------------------------------------	---------------------------------



ELEV 1448	TDZE 1448
-----------	-----------



CATEGORY	A	B	C	D
LPV DA		1852-1 ³ / ₈	404 (500-1 ³ / ₈)	
LNAV/VNAV DA		2154-2 ¹ / ₂	706 (800-2 ¹ / ₂)	
LNAV MDA	2060-1	612 (700-1)	2060-1 ³ / ₄	612 (700-1 ³ / ₄)
CIRCLING	2100-1 652 (700-1)	2280-1 ¹ / ₄ 832 (900-1 ¹ / ₄)	2280-2 ¹ / ₂ 832 (900-2 ¹ / ₂)	2280-2 ³ / ₄ 832 (900-2 ³ / ₄)

MIRL Rwy 6-24 0

SE-4, 09 SEP 2021 to 07 OCT 2021

SE-4, 09 SEP 2021 to 07 OCT 2021