

VORTAC ODF 113.4 Chan 81	APP CRS 048°	Rwy Idg TDZE 1446 Apt Elev 1448	4111
--	------------------------	---	-------------

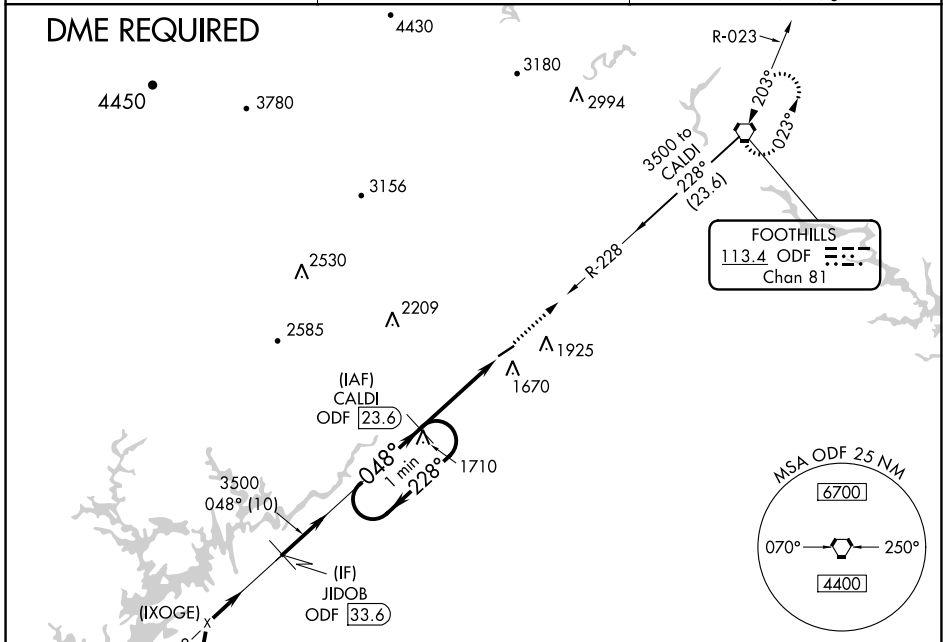
VOR RWY 6

HABERSHAM COUNTY (AJR)

▼ When local altimeter setting not received, use Gainesville altimeter setting and increase all MDA 80 feet and increase S-6 Cats C/D and Circling Cats C/D visibility ¼ mile.
▲ NA Circling Rwy 24 NA at night. Rwy 6 helicopter visibility reduction below ¾ SM NA. Rwy 24 helicopter visibility reduction below 1 SM NA. DME required.

MISSED APPROACH: Climb to 5000 via ODF R-228 to ODF VORTAC and hold.

AWOS-3 119.175	ATLANTA CENTER 134.8 379.95	UNICOM 122.7 (CTAF) 0
--------------------------	---------------------------------------	---------------------------------

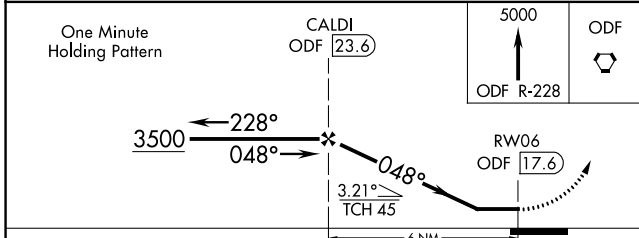


Procedure NA for arrivals at WOMAC via V463 southbound.

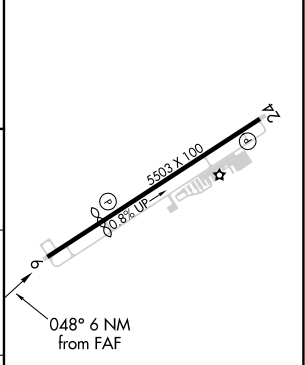
(IXOGE)

(IAF) WOMAC

4000 NoPT to JIDOB 010° (7.6) and 048° (5.5)



ELEV 1448	TDZE 1446
-----------	-----------



CATEGORY	A	B	C	D
S-6	1980-1	534 (600-1)	1980-1½ 534 (600-1½)	1980-1¾ 534 (600-1¾)
CIRCLING	2100-1 652 (700-1)	2280-1¼ 832 (900-1¼)	2280-2½ 832 (900-2½)	2280-2¾ 832 (900-2¾)

MIRL Rwy 6-24 0

SE-4, 09 SEP 2021 to 07 OCT 2021

SE-4, 09 SEP 2021 to 07 OCT 2021