

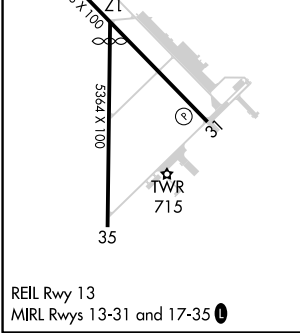
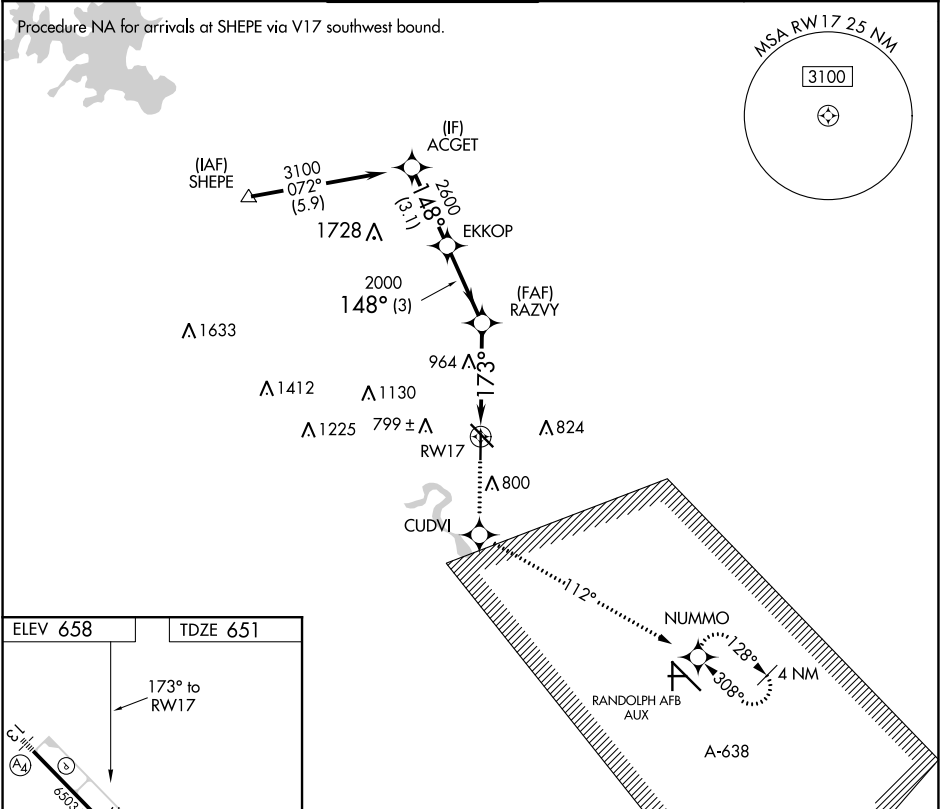
APP CRS <b>173°</b>	Rwy Idg TDZE Apt Elev	<b>4842</b> <b>651</b> <b>658</b>
------------------------	-----------------------------	---

# RNAV (GPS) RWY 17

NEW BRAUNFELS RGNL (BAZ)

RNP APCH.	MISSED APPROACH: Climb to 3500 direct CUDVI and via 112° track to NUMMO and hold, continue climb-in-hold to 3500.
<p>▼ When local altimeter setting not received, use San Marcos Rgnl altimeter setting and increase all MDAs 60 feet and visibility Cat C ¼ SM. VDP NA when using San Marcos Rgnl altimeter setting.</p>	

ATIS <b>119.325</b>	SAN ANTONIO APP CON <b>124.45 335.625</b>	NEW BRAUNFELS TOWER ★ <b>127.05 285.4</b>	GND CON <b>120.175</b>	CLNC DEL <b>134.75</b>	UNICOM <b>122.7</b>	CTAF <b>127.05</b> ①
------------------------	--	--	---------------------------	---------------------------	------------------------	-------------------------



3500	CUDVI	NUMMO	ACGET
↑	✧	✧	
	Ir 112°		
		RAZVY	EKKOP
	1.6 NM to RWY 17	3.03°	148°
	TCH 45	2000	2600
	173°		3100
	1.6 NM	2.5 NM	3 NM
			3.1 NM
CATEGORY	A	B	C
LNAV MDA	1220-1	569 (600-1)	1220-1½ 569 (600-1½)
			1220-1¾ 569 (600-1¾)

Procedure Turn NA

SC-3, 09 SEP 2021 to 07 OCT 2021

SC-3, 09 SEP 2021 to 07 OCT 2021