

WAAS CH 65636 W17A	APP CRS 173°	Rwy Idg TDZE 639 Apt Elev 656
--	------------------------	---

RNAV (GPS) RWY 17

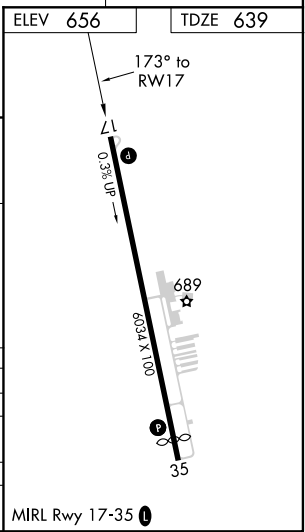
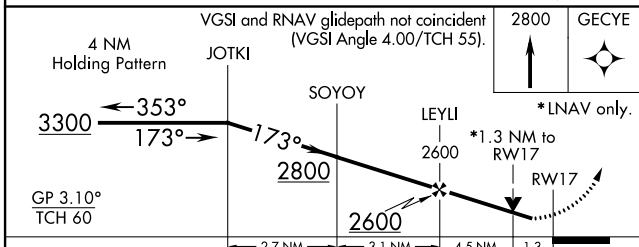
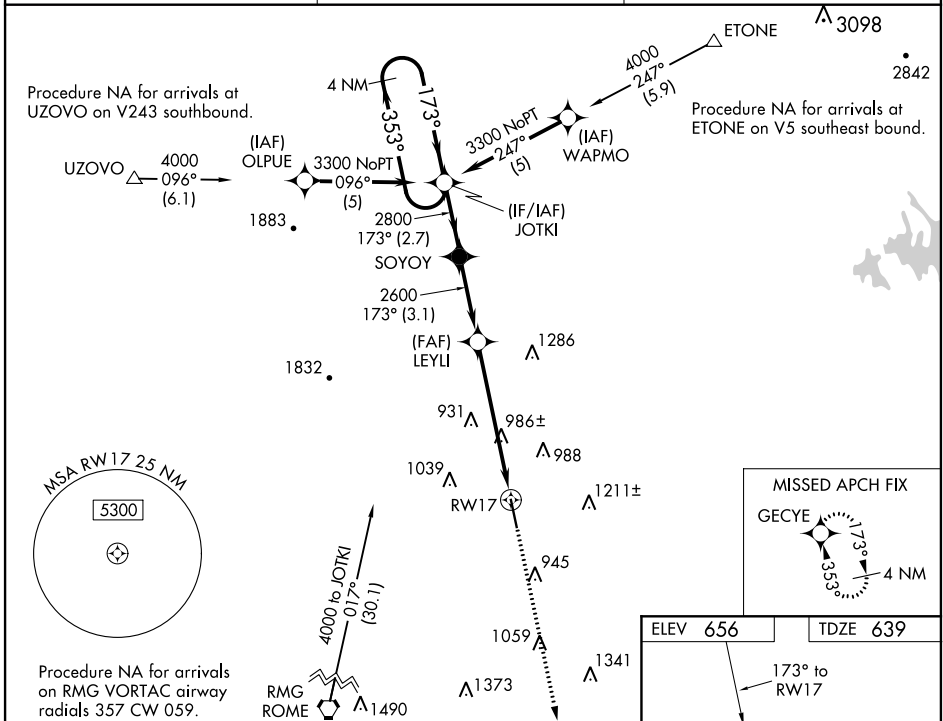
TOM B DAVID FIELD (CZL)

RNP APCH.

NA Baro-VNAV and VDP NA when using Rome altimeter setting. For uncompensated Baro-VNAV systems, LNAV/VNAV NA below -15°C (5°F) or above 45°C (113°F). When local altimeter setting not received, use Rome altimeter setting and increase all DA 31 feet and all MDA 40 feet; increase LNAV/VNAV all Cats visibility and LNAV Cat C/D visibility 1/8 mile, and Circling Cat C visibility 1/4 mile. Rwy 17 helicopter visibility reduction below 3/4 SM NA.

MISSED APPROACH:
Climb to 2800 direct GECYE and hold.

AWOS-3 119.975	ATLANTA CENTER 124.5 270.325	UNICOM 122.8 (CTAF)
--------------------------	--	-------------------------------



CATEGORY	A	B	C	D
LPV DA		930-1	291 (300-1)	
LNAV/VNAV DA		1100-1½	461 (500-1½)	
LNAV MDA	1240-1	601 (600-1)	1240-1¾	601 (600-1¼)
CIRCLING	1320-1	664 (700-1)	1580-2¾	1580-3
			924 (1000-2¾)	924 (1000-3)

SE-4, 09 SEP 2021 to 07 OCT 2021

SE-4, 09 SEP 2021 to 07 OCT 2021