

APP CRS	Rwy Idg	4000
337°	TDZE	425
	Apt Elev	430

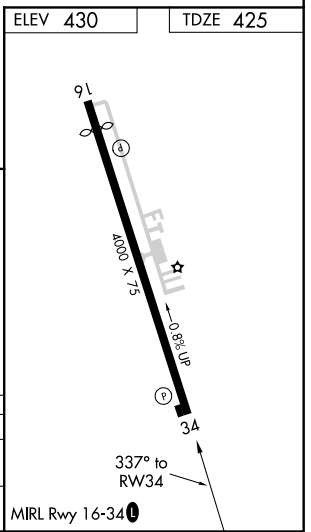
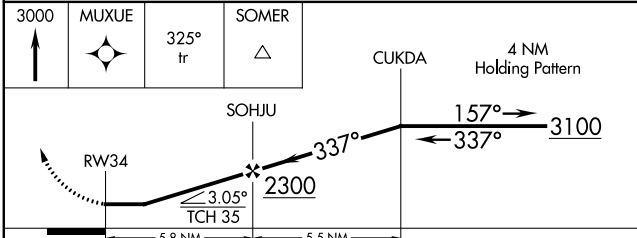
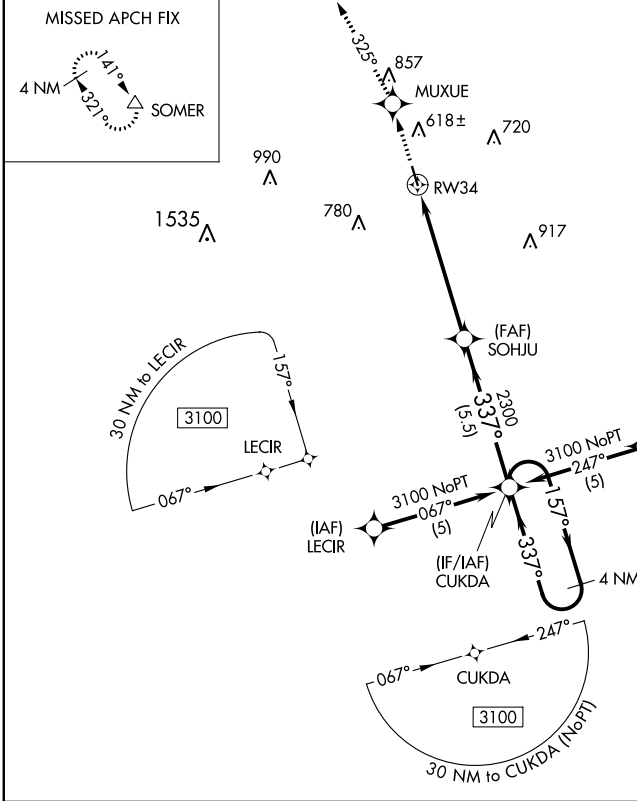
RNAV (GPS) RWY 34

PLEASANTON MUNI (P/E/Z)

RNP APCH.
 ⚠ When local altimeter setting not received, use Kelly Fld altimeter setting and increase all MDA 100 feet. Procedure NA at night. Rwy 34 helicopter visibility reduction below 1 SM NA.

MISSED APPROACH: Climb to 3000 direct MUXUE and via 325° track to SOMER and hold.

AWOS-3 118.575	SAN ANTONIO APP CON 118.05 353.5	CLNC DEL 121.375	UNICOM 122.7 (CTAF)
--------------------------	--	----------------------------	-------------------------------



CATEGORY	A	B	C	D
LNVA MDA	960-1	535 (600-1)	NA	
CIRCLING	1020-1	590 (600-1)	NA	

SC-3, 09 SEP 2021 to 07 OCT 2021

SC-3, 09 SEP 2021 to 07 OCT 2021