

WAAS CH <b>58228</b> <b>W36A</b>	APP CRS <b>357°</b>	Rwy Idg TDZE Apt Elev	<b>4100</b> <b>1242</b> <b>1250</b>
--	------------------------	-----------------------------	---

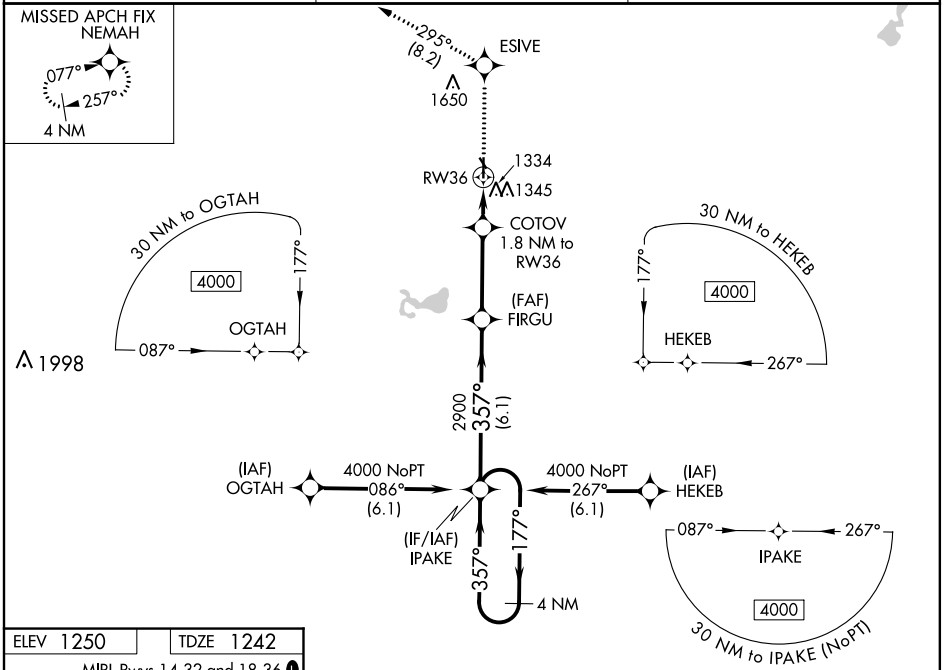
# RNAV (GPS) RWY 36

SAC CITY MUNI (SKI)

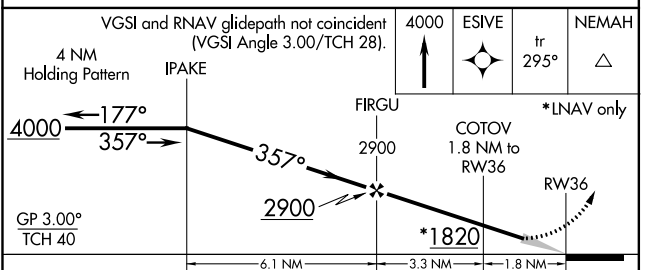
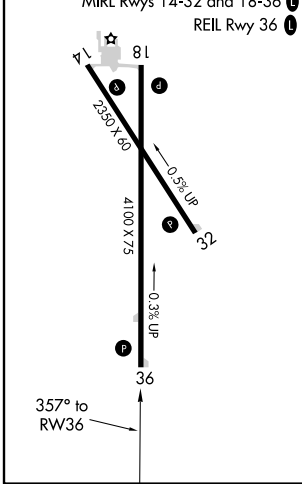
**⚠** Night landing: Rwy 14 NA. Baro-VNAV NA. DME/DME RNP-0.3 NA.  
**⚠** NA Use Carroll altimeter setting; when not received, use Denison altimeter setting and increase all DA 15 feet and all MDA 20 feet, increase LNAV/VNAV visibility 1/8 mile all Cats.

MISSED APPROACH: Climb to 4000 direct ESIVE and on track 295° to NEMAH and hold.

CIN AWOS-3 <b>118.025</b>	MINNEAPOLIS CENTER <b>134.0 288.3</b>	UNICOM <b>122.8 (CTAF)</b> <b>0</b>
------------------------------	--	--



ELEV 1250	TDZE 1242
-----------	-----------



CATEGORY	A	B	C	D
LPV DA	1499-1	257 (300-1)		NA
LNAV/VNAV DA	1549-1	307 (300-1)		NA
LNAV MDA	1660-1	418 (500-1)		NA
CIRCLING	1740-1	490 (500-1)		NA

NC-3, 09 SEP 2021 to 07 OCT 2021

NC-3, 09 SEP 2021 to 07 OCT 2021