

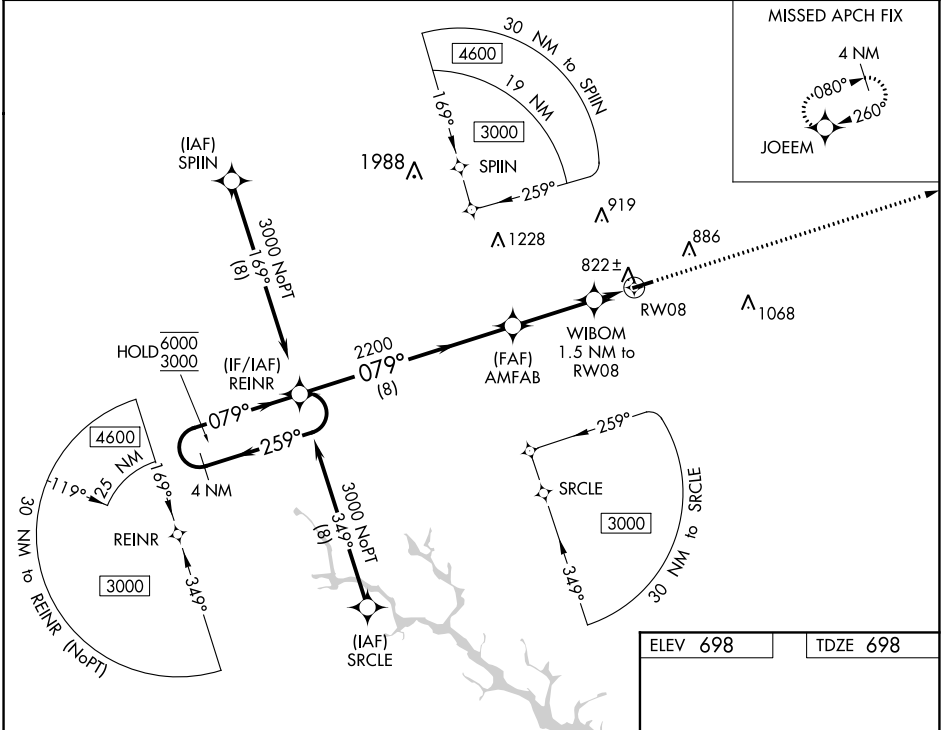
WAAS CH 72635 W08A	APP CRS 079°	Rwy Idg TDZE 698 Apt Elev 698	4051
--	------------------------	---	-------------

RNAV (GPS) RWY 8

LAURENS COUNTY (LUX)

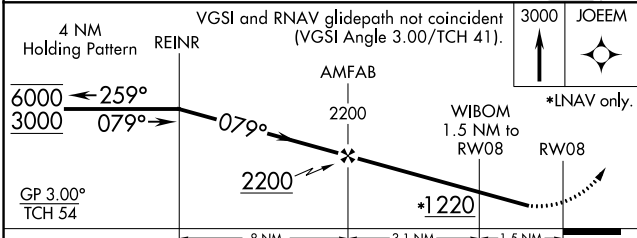
RNP APCH. ▼ Rwy 8 helicopter visibility reduction below 3/4 SM NA. For uncompensated Baro-VNAV systems, LNAV/VNAV NA below -16°C or above 54°C.	MISSED APPROACH: Climb to 3000 direct JOEEM and hold.
---	---

AWOS-3 123.975	GREER APP CON ★ 120.6 350.2	UNICOM 122.8 (CTAF) 0
--------------------------	---------------------------------------	---------------------------------



SE-2, 09 SEP 2021 to 07 OCT 2021

SE-2, 09 SEP 2021 to 07 OCT 2021



ELEV 698	TDZE 698
----------	----------

Diagram details: RWY 8 and RWY 26. RNAV alignment 079° to RWY 8. RWY 8 width 4051 X 75.

REIL Rwys 8 and 26 0
MIRL Rwy 8-26 0

CATEGORY	A	B	C	D
LPV DA	948-3/4	250 (300-3/4)		NA
LNAV/VNAV DA	957-3/4	259 (300-3/4)		NA
LNAV MDA	1080-1	382 (400-1)		NA
C CIRCLING	1200-1	502 (600-1)		NA