

ILS or LOC RWY 4

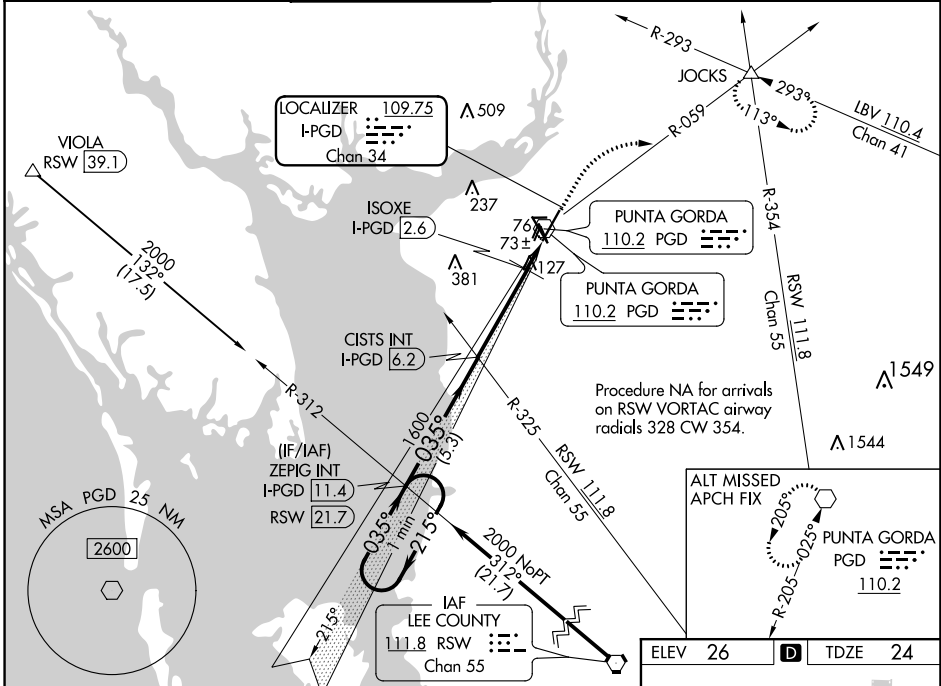
PUNTA GORDA (PGD)

LOC/DME I-PGD 109.75 Chan 34	APP CRS 035°	Rwy Idg 7193 TDZE 24 Apt Elev 26
--	------------------------	---

⚠ When local altimeter setting not received, use Page Fld altimeter setting and increase DA to 274 feet and all MDAs 60 feet; increase S-LOC 4 Cats C and D visibility 1/8 SM, and Circling Cats C and D visibility 1/4 SM; ISOXE fix minimums: increase S-LOC 4 Cats C and D visibility 1/8 SM, and Circling Cats C and D visibility 1/4 SM.

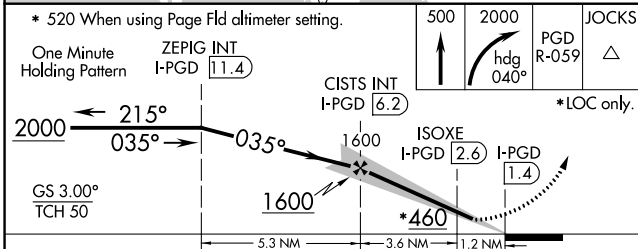
MISSED APPROACH: Climb to 500 then climbing right turn to 2000 on heading 040° and PGD VOR R-059 to JOCKS INT and hold.

ATIS ★ 135.675	FORT MYERS APP CON ★ 127.05 306.2	PUNTA GORDA TOWER ★ 121.0 (CTAF) 0	GND CON 119.55	CLNC DEL 119.55	CLNC DEL 127.05 (When twr closed)	UNICOM 122.975
--------------------------	---	--	--------------------------	---------------------------	--	--------------------------



SE-3, 09 SEP 2021 to 07 OCT 2021

SE-3, 09 SEP 2021 to 07 OCT 2021



CATEGORY	A	B	C	D
S-ILS 4		224-3/4	200 (200-3/4)	
S-LOC 4	460-1	436 (500-1)	460-1 1/4	436 (500-1 1/4)
CIRCLING	460-1	580-1	600-1 1/2	740-2 1/4
	434 (500-1)	554 (600-1)	574 (600-1 1/2)	714 (800-2 1/4)
ISOXE FIX MINIMUMS (DME REQUIRED)				
S-LOC 4		380-1	356 (400-1)	
CIRCLING	460-1	580-1	600-1 1/2	740-2 1/4
	434 (500-1)	554 (600-1)	574 (600-1 1/2)	714 (800-2 1/4)

