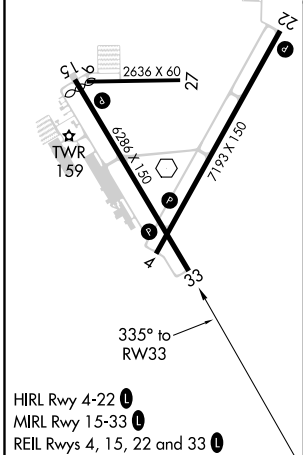
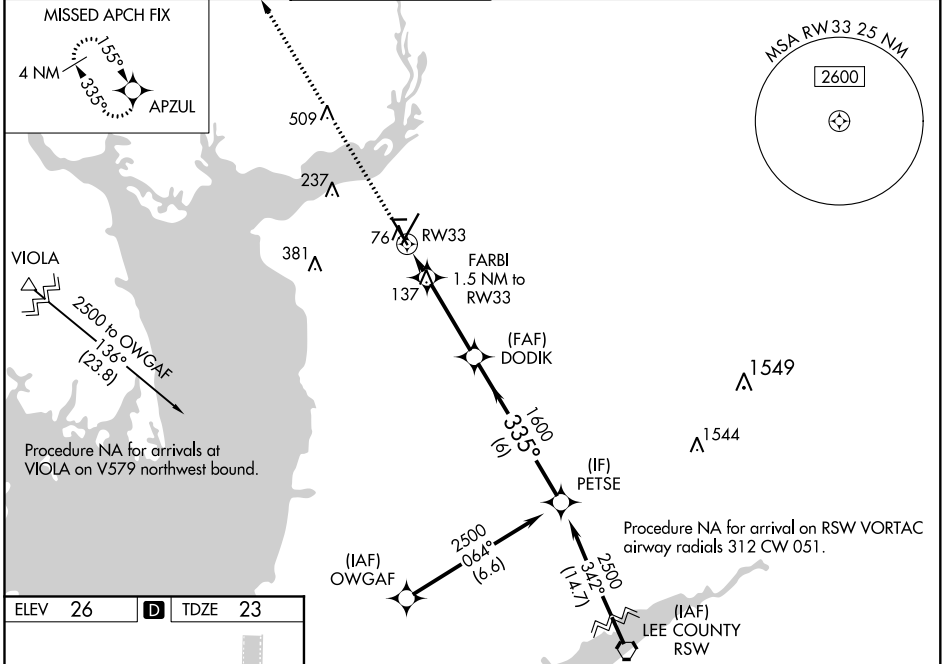


WAAS CH 93507 W33A	APP CRS 335°	Rwy Idg TDZE Apt Elev	6015 23 26
--	------------------------	-----------------------------	---------------------------------------

RNAV (GPS) RWY 33

PUNTA GORDA (PGD)

RNP APCH.					MISSED APPROACH: Climb to 2000 direct APZUL and hold.	
<p>▽ For uncompensated Baro-VNAV systems, LNAV/VNAV NA below 2°C or above 54°C.</p>						
ATIS ★ 135.675	FORT MYERS APP CON ★ 127.05 306.2	PUNTA GORDA TOWER ★ 121.0 (CTAF) 0	GND CON 119.55	CLNC DEL 119.55	CLNC DEL 127.05 (When twr closed)	UNICOM 122.975



ELEV 26	D	TDZE 23				
<p>2000 APZUL</p>						
<p>*LNAV only.</p>						
<p>FARBI 1.5 NM to RW33</p>						
<p>*1 NM to RW33</p>						
<p>1 NM 0.5 3.3 NM 6 NM</p>						
CATEGORY	A	B	C	D		
LPV DA		273-3/4	250 (300-3/4)			
LNAV/VNAV DA		288-7/8	265 (300-7/8)			
LNAV MDA		400-1	377 (400-1)			
C CIRCLING	460-1 434 (500-1)	580-1 554 (600-1)	600-1 1/2 574 (600-1 1/2)	740-2 1/4 714 (800-2 1/4)		

SE-3, 09 SEP 2021 to 07 OCT 2021

SE-3, 09 SEP 2021 to 07 OCT 2021