

WAAS CH <b>48807</b> <b>W04A</b>	APP CRS <b>035°</b>	Rwy Idg TDZE Apt Elev	<b>7193</b> <b>24</b> <b>26</b>
--	------------------------	-----------------------------	---------------------------------------

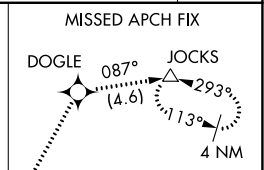
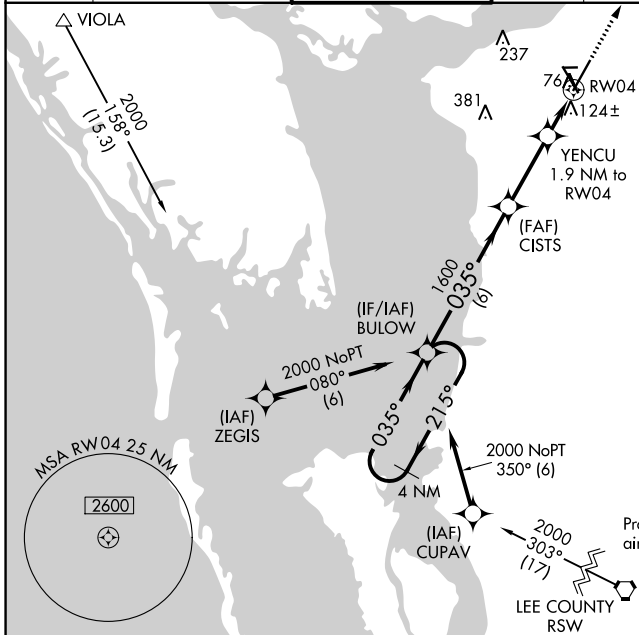
# RNAV (GPS) RWY 4

PUNTA GORDA (PGD)

**RNP APCH.**  
 ▼ When local altimeter setting not received, use Page Fld altimeter setting and increase LPV DA to 274 feet, LNAV/VNAV DA to 443 feet, and all MDA 60 feet; increase LNAV/VNAV all Cats visibility 1/4 SM, LNAV Cats C and D visibility 1/4 SM, and Circling Cats C and D visibility 1/4 SM. For uncompensated Baro-VNAV systems, LNAV/VNAV NA below 0°C or above 54°C.

**MISSED APPROACH:** Climb to 2000 direct DOGLE and track 087° to JOCKS and hold.

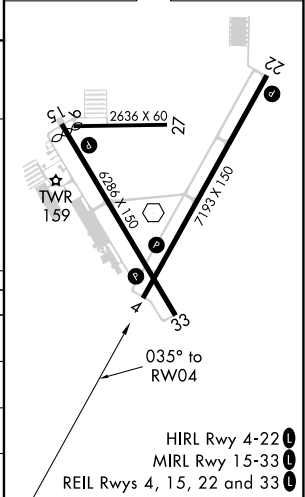
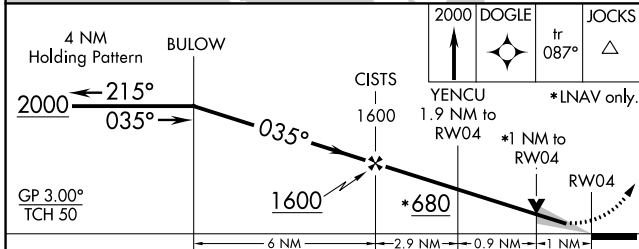
ATIS ★ <b>135.675</b>	FORT MYERS APP CON ★ <b>127.05 306.2</b>	PUNTA GORDA TOWER ★ <b>121.0 (CTAF) 0</b>	GND CON <b>119.55</b>	CLNC DEL <b>119.55</b>	CLNC DEL <b>127.05</b> (When twr closed)	UNICOM <b>122.975</b>
--------------------------	---	--	--------------------------	---------------------------	--	--------------------------



1549  $\Delta$   
 $\Delta$  1544

Procedure NA for arrivals on RSW VORTAC airway radials 312 CW 016.

ELEV <b>26</b>	<b>D</b> TDZE <b>24</b>
----------------	-------------------------



CATEGORY	A	B	C	D
LPV DA		224-3/4	200 (200-3/4)	
LNAV/VNAV DA		393-1	369 (400-1)	
LNAV MDA		400-1	376 (400-1)	
CIRCLING	460-1	580-1	600-1 1/2	740-2 1/4
	434 (500-1)	554 (600-1)	574 (600-1 1/2)	714 (800-2 1/4)

SE-3, 09 SEP 2021 to 07 OCT 2021

SE-3, 09 SEP 2021 to 07 OCT 2021