

VOR/DME JVL 114.3 Chan 90	APP CRS 118°	Rwy Idg TDZE Apt Elev	N/A N/A 817
---	------------------------	-----------------------------	--

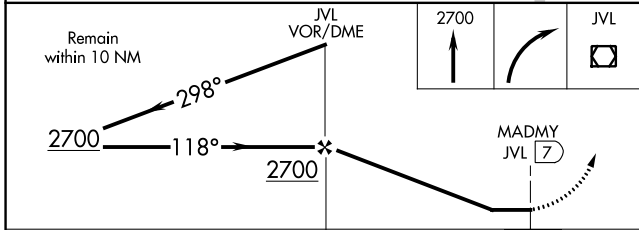
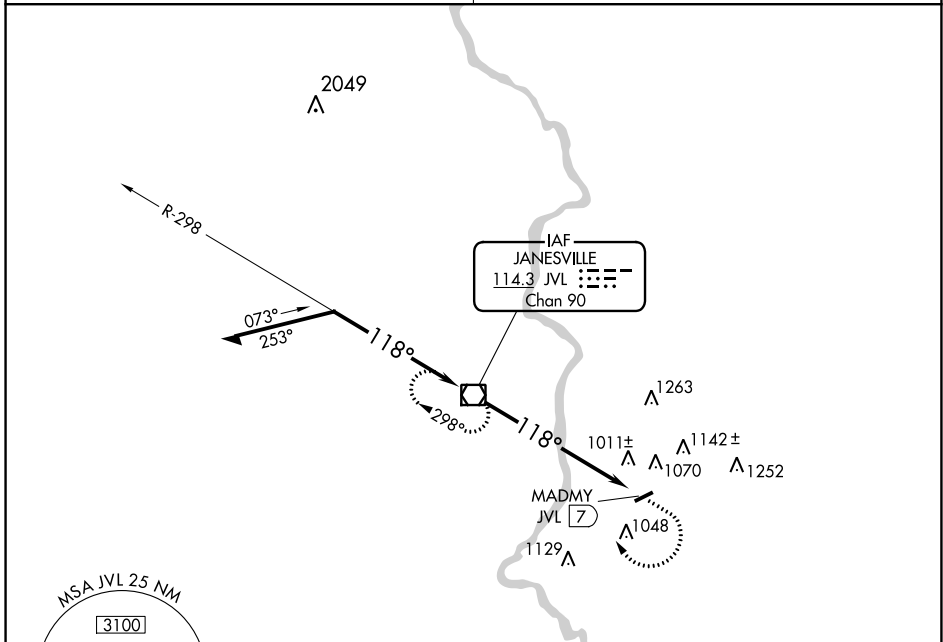
VOR-A
BELOIT (44C)

NA Use Janesville altimeter setting, when not received, use Chicago/Rockford Intl altimeter setting.

MISSED APPROACH: Climb to 2700 then right turn direct JVL VOR/DME and hold.

ROCKFORD APP CON **121.0 327.0**

UNICOM **122.7 (CTAF) 0**



CATEGORY	A	B	C	D
CIRCLING	1440-1 623 (700-1)	1540-1 723 (800-1)	NA	NA
CHICAGO/ROCKFORD INTL ALTIMETER SETTING MINIMUMS				
CIRCLING	1480-1 663 (700-1)	1580-1 763 (800-1)	NA	NA

ELEV 817					
118° 7 NM from FAF					
0.3% UP					
3300 X 50					
LIRL Rwy 7-25 0					
FAF to MAP 7 NM					
Knots	60	90	120	150	180
Min:Sec	7:00	4:40	3:30	2:48	2:20

EC-3, 09 SEP 2021 to 07 OCT 2021

EC-3, 09 SEP 2021 to 07 OCT 2021