

WAAS CH 78125 W27A	APP CRS 268°	Rwy Idg TDZE Apt Elev	4799 2728 2729
--	------------------------	-----------------------------	---

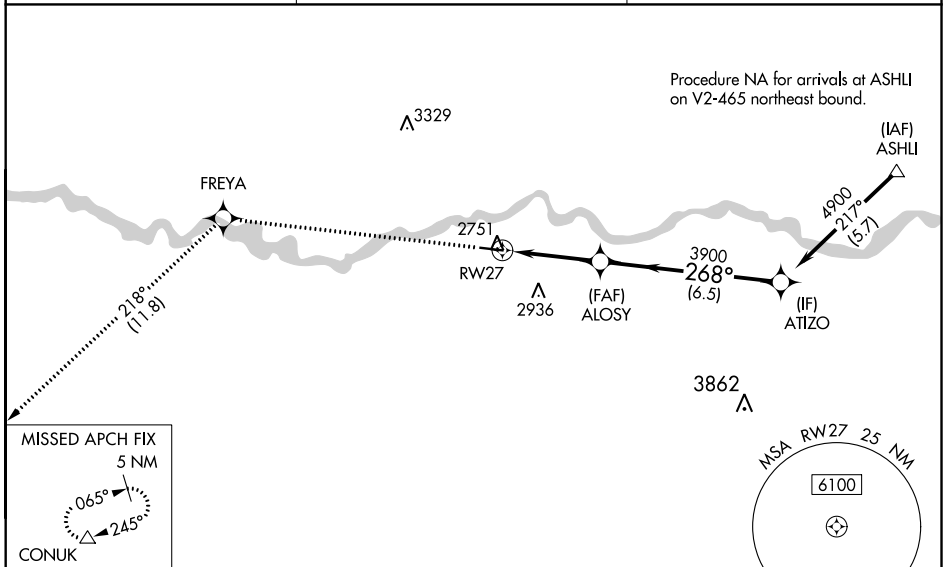
RNAV (GPS) RWY 27

TILLITT FIELD (1S3)

NA For uncompensated Baro-VNAV systems, LNAV/VNAV NA below -20°C (-4°F) or above 53°C (128°F). DME/DME RNP-0.3 NA. Helicopter visibility reduction below 3/4 SM NA. When local altimeter setting not received, use Miles City altimeter setting: increase LPV and LNAV/VNAV DA to 3066 and all visibilities 1/8 mile. Increase all MDA 100 feet and all Cat C and D visibilities 1/4 mile. VDP and Baro-VNAV NA when using Miles City altimeter setting.

MISSED APPROACH: Climb to 6000 direct FREYA and on track 218° to CONUK and hold.

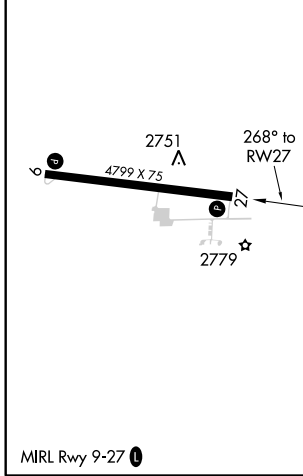
AWOS-AV 122.8	SALT LAKE CENTER 126.85 305.2	UNICOM 122.8 (CTAF) 0
-------------------------	---	---------------------------------



NW-1, 09 SEP 2021 to 07 OCT 2021

NW-1, 09 SEP 2021 to 07 OCT 2021

ELEV 2729	TDZE 2728
-----------	-----------



6000	FREYA	tr 218°	CONUK	VGSI and RNAV glidepath not coincident (VGSI Angle 3.00/TCH 29).	ATIZO
↑	✧		△		
*LNAV only		*0.9 NM to RWY 27		ALOSY	4900
RWY 27		3900		3900	GP 3.00° TCH 51
0.9 NM		2.6 NM		6.5 NM	
CATEGORY	A	B	C	D	
LPV DA		2978-1	250 (300-1)		
LNAV/VNAV DA		2978-1	250 (300-1)		
LNAV MDA		3040-1	312 (400-1)		
C CIRCLING	3160-1 431 (500-1)	3320-1 591 (600-1)	3340-1 3/4 611 (700-1 3/4)	3700-3 971 (1000-3)	