

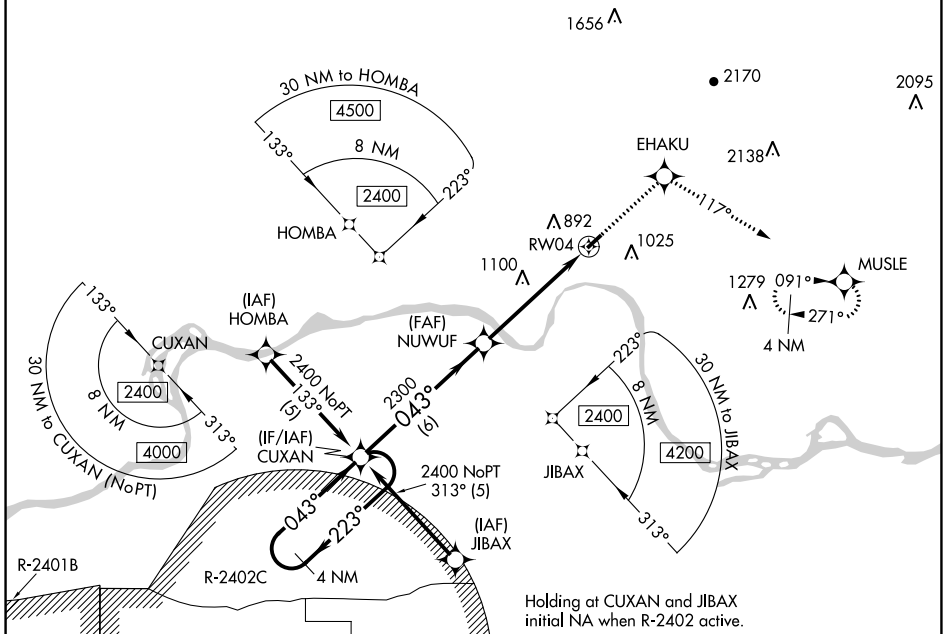
APP CRS	Rwy Idg	3302
043°	TDZE	648
	Apt Elev	648

RNAV (GPS) RWY 4

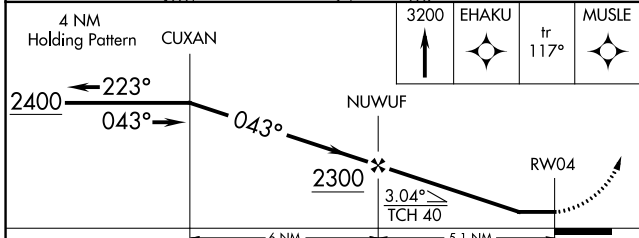
OZARK-FRANKLIN COUNTY (7M5)

▼ DME/DME RNP-0.3 NA. Visibility reduction by helicopters NA. Use Fort Smith altimeter setting; when not received, use Drake Field altimeter setting and increase all MDAs 80 feet; increase LNAV Cat A/C and Circling Cat C visibility 1/4 SM.
▲ NA MISSED APPROACH: Climb to 3200 direct EHAKU and on track 117° to MUSLE and hold.

RAZORBACK APP CON ★ 120.9 343.75	UNICOM 122.8 (CTAF) 0
--	---------------------------------

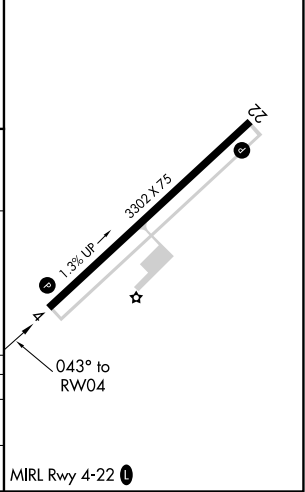


Holding at CUXAN and JIBAX initial NA when R-2402 active.



ELEV 648	TDZE 648
----------	----------

CATEGORY	A	B	C	D
LNAV MDA	1480-1 832 (900-1)	1480-1 1/4 832 (900-1 1/4)	1480-2 1/2 832 (900-2 1/2)	NA
CIRCLING	1480-1 1/4	832 (900-1 1/4)	1500-2 1/2 852 (900-2 1/2)	NA



SC-1, 09 SEP 2021 to 07 OCT 2021

SC-1, 09 SEP 2021 to 07 OCT 2021