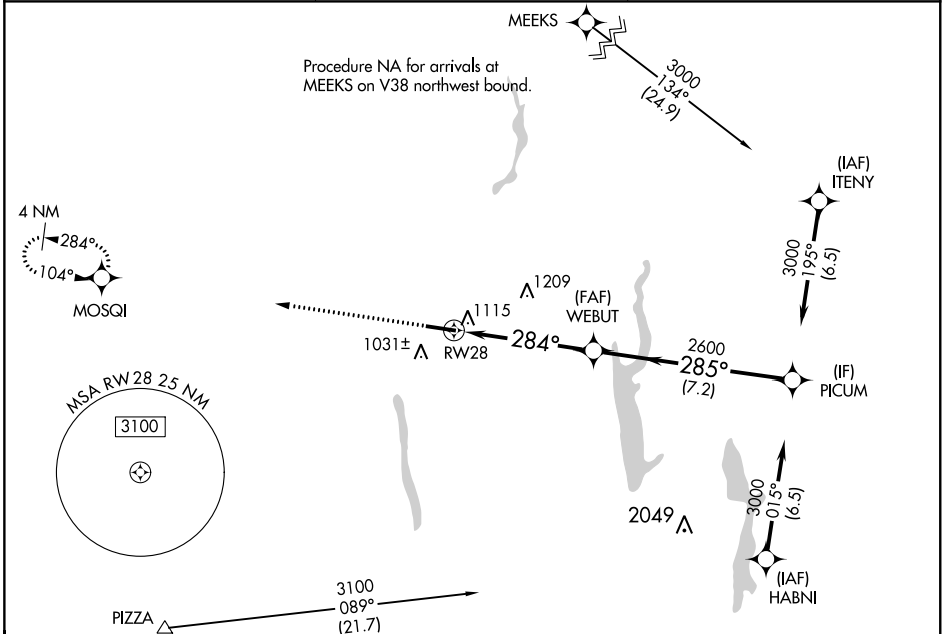


WAAS CH <b>50506</b> <b>W28A</b>	APP CRS <b>284°</b>	Rwy Idg TDZE <b>5800</b> <b>945</b> Apt Elev <b>945</b>
--	------------------------	--

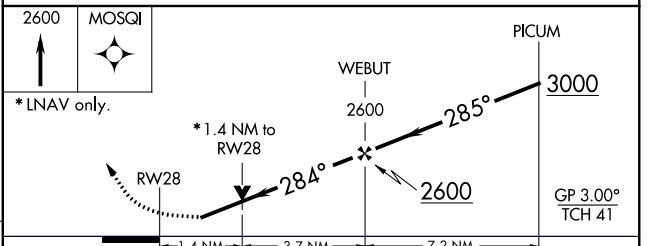
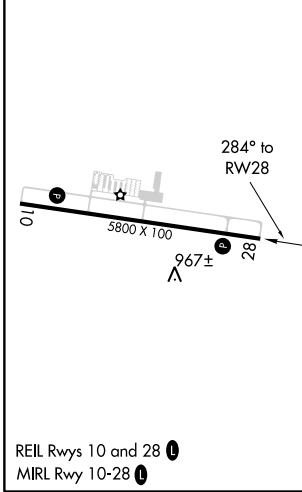
# RNAV (GPS) RWY 28

DELAWARE MUNI - JIM MOORE FLD (DLZ)

RNP APCH. ▼ For uncompensated Baro-VNAV systems, LNAV/VNAV NA below -16°C or above 54°C. Rwy 28 helicopter visibility reduction below ¾ SM NA.		MISSED APPROACH: Climb to 2600 direct MOSQI and hold.
AWOS-3 <b>119.025</b>	COLUMBUS APP CON <b>125.95 317.775</b>	UNICOM <b>122.7 (CTAF)</b>



ELEV <b>945</b>	TDZE <b>945</b>
-----------------	-----------------



CATEGORY	A	B	C	D
LPV DA	1195-7/8 250 (300-7/8)			
LNAV/VNAV DA	1406-1 3/4 461 (500-1 3/4)			
LNAV MDA	1420-1	475 (500-1)	1420-1 3/8	475 (500-1 3/8)
<input checked="" type="checkbox"/> CIRCLING	1420-1	475 (500-1)	1560-1 3/4 615 (700-1 3/4)	1560-2 615 (700-2)

# RNAV (GPS) RWY 28

EC-2, 09 SEP 2021 to 07 OCT 2021

EC-2, 09 SEP 2021 to 07 OCT 2021