

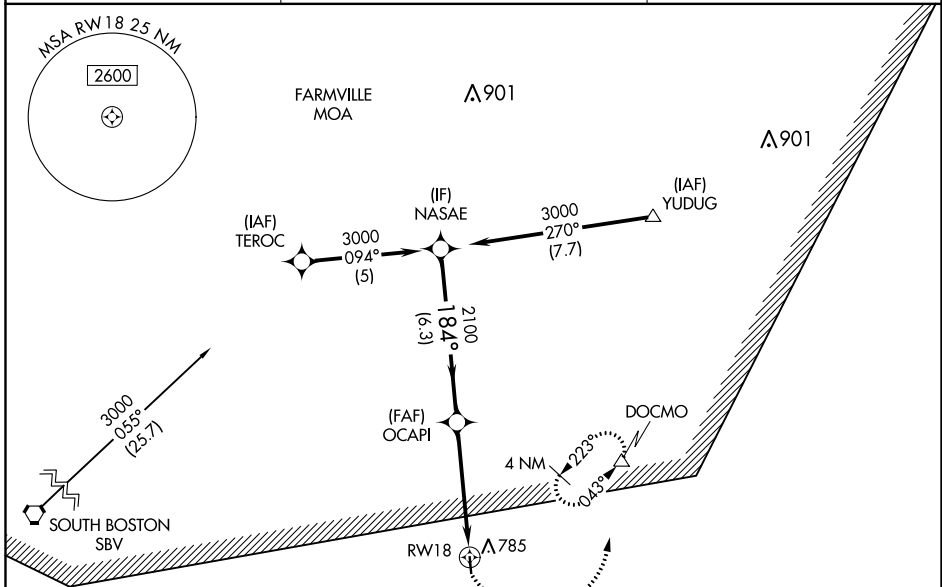
APP CRS	Rwy Idg	<b>3400</b>
<b>184°</b>	TDZE	<b>503</b>
	Apt Elev	<b>503</b>

# RNAV (GPS) RWY 18

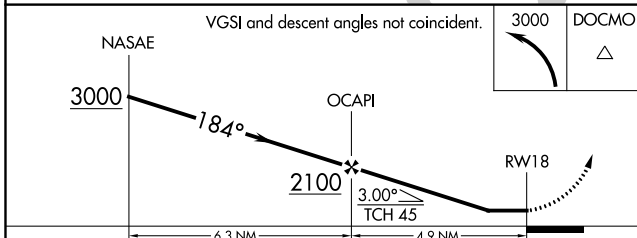
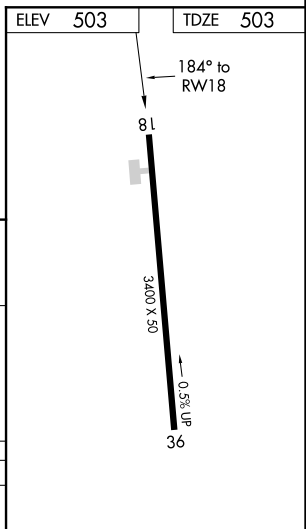
CHASE CITY MUNI (CXE)

RNP APCH.	Use South Hill altimeter setting, when not received use Danville altimeter setting and increase all MDA 60 feet. Procedure NA at night. Rwy 18 helicopter visibility reduction below 1 SM NA.	MISSED APPROACH: Climbing left turn to 3000 direct DOCMO and hold, continue climb-in-hold to 3000.
▼ ▲ NA		

AWOS-3 <b>121.225</b>	WASHINGTON CENTER <b>118.75 353.9</b>	UNICOM <b>122.9</b> (CTAF)
--------------------------	--	-------------------------------



Procedure NA for arrivals at SBV VORTAC on airway radials 032 CW 086.



CATEGORY	A	B	C	D
LNAV MDA	1520-3	1017 (1100-3)	NA	

NE-3, 09 SEP 2021 to 07 OCT 2021

NE-3, 09 SEP 2021 to 07 OCT 2021