

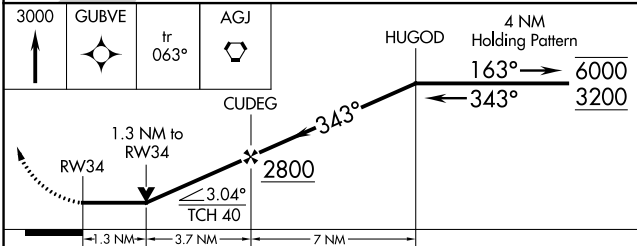
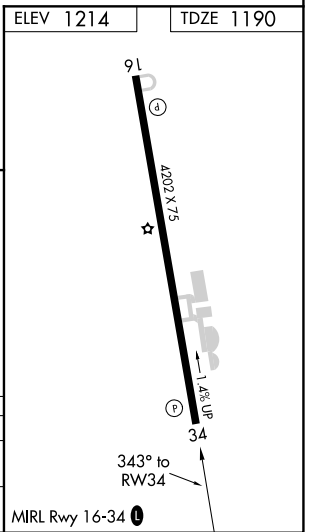
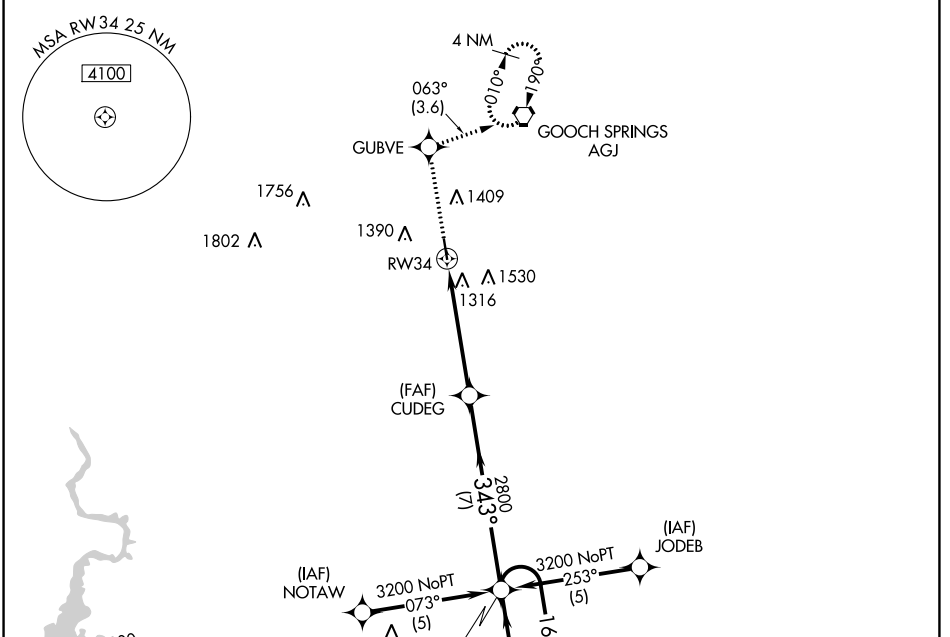
APP CRS 343°	Rwy Idg 4202
	TDZE 1190
	Apt Elev 1214

RNAV (GPS) RWY 34

LAMPASAS (LZZ)

RNP APCH.	MISSED APPROACH: Climb to 3000 direct GUBVE and on track 063° to AGJ VORTAC and hold.
<p>▼ Circling Rwy 16 NA at night. Rwy 34 helicopter visibility reduction below ¾ SM NA.</p>	

AWOS-3 119.075	GRAY APP CON 120.075 323.15	UNICOM 122.8 (CTAF) 0
--------------------------	---------------------------------------	---------------------------------



CATEGORY	A	B	C	D
LNVA MDA	1620-1	430 (500-1)	1620-1¼ 430 (500-1¼)	NA
CIRCLING	1680-1 466 (500-1)	1880-1 666 (700-1)	1880-1¾ 666 (700-1¾)	NA

SC-3, 09 SEP 2021 to 07 OCT 2021

SC-3, 09 SEP 2021 to 07 OCT 2021