

MEADE, KANSAS

AL-6286 (FAA)

21140

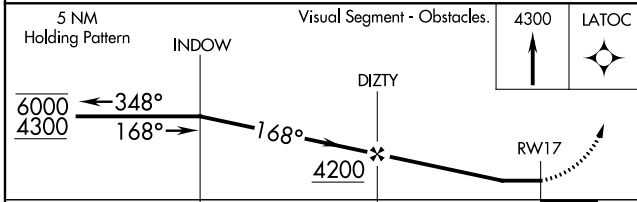
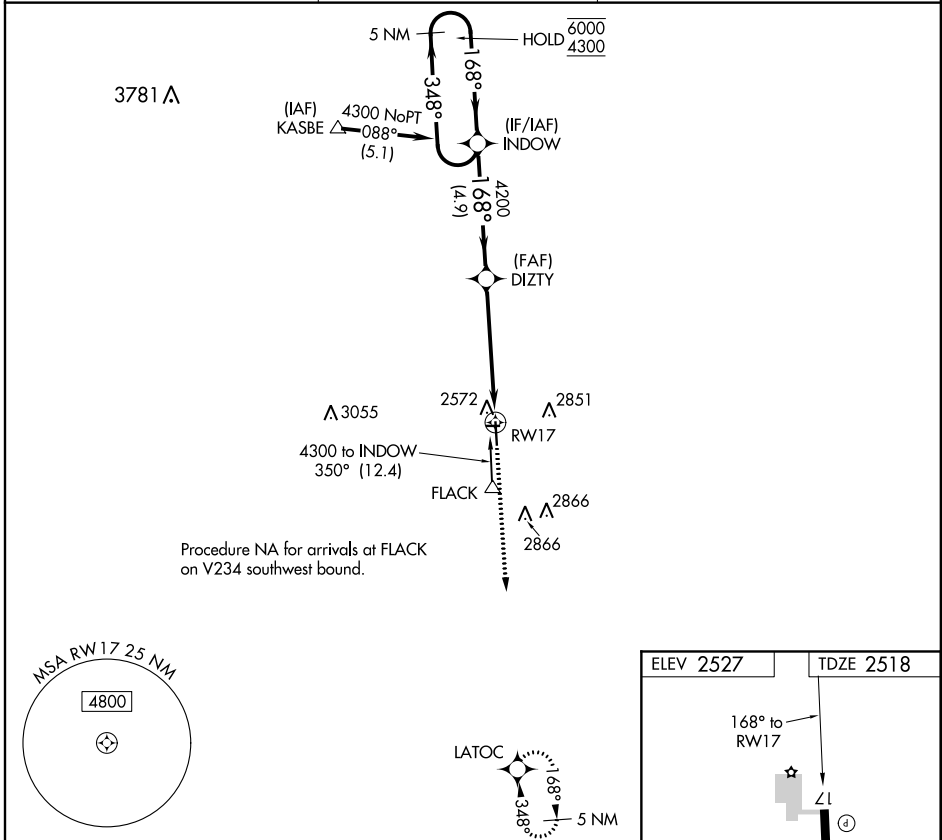
APP CRS	Rwy Idg	4800
168°	TDZE	2518
	Apt Elev	2527

RNAV (GPS) RWY 17

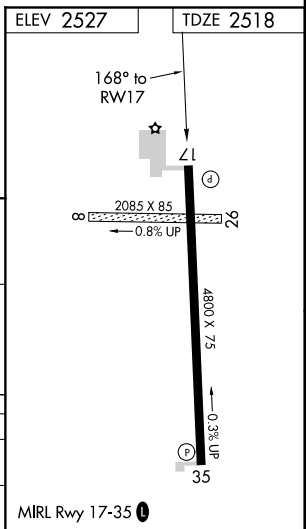
MEADE MUNI (MEJ)

RNP APCH.	<p>▼ Circling NA to Rwy 8 and 26. Rwy 17 helicopter visibility reduction below 1 SM NA.</p> <p>▲ NA When local altimeter setting not received, use Liberal altimeter setting and increase all MDAs 140 feet.</p>	MISSED APPROACH: Climb to 4300 direct LATOC and hold.
-----------	--	---

AWOS-3 119.425	KANSAS CITY CENTER 134.0 257.625	UNICOM 122.8 (CTAF) 0
--------------------------	--	---------------------------------



CATEGORY	A	B	C	D
LNAV MDA	3100-1	582 (600-1)	NA	
CIRCLING	3100-1 573 (600-1)	3160-1 633 (700-1)	NA	



NC-2, 09 SEP 2021 to 07 OCT 2021

NC-2, 09 SEP 2021 to 07 OCT 2021

MEADE, KANSAS
Orig-C 20MAY21

37°17'N-100°21'W

MEADE MUNI (MEJ)

RNAV (GPS) RWY 17