

WAAS CH 82335 W19A	APP CRS 189°	Rwy Idg TDZE Apt Elev	5000 1077 1077
---------------------------------	------------------------	-----------------------------	---

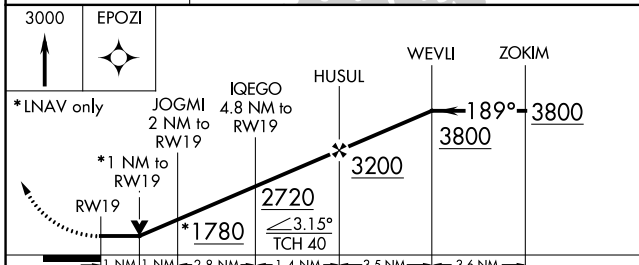
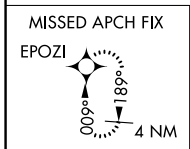
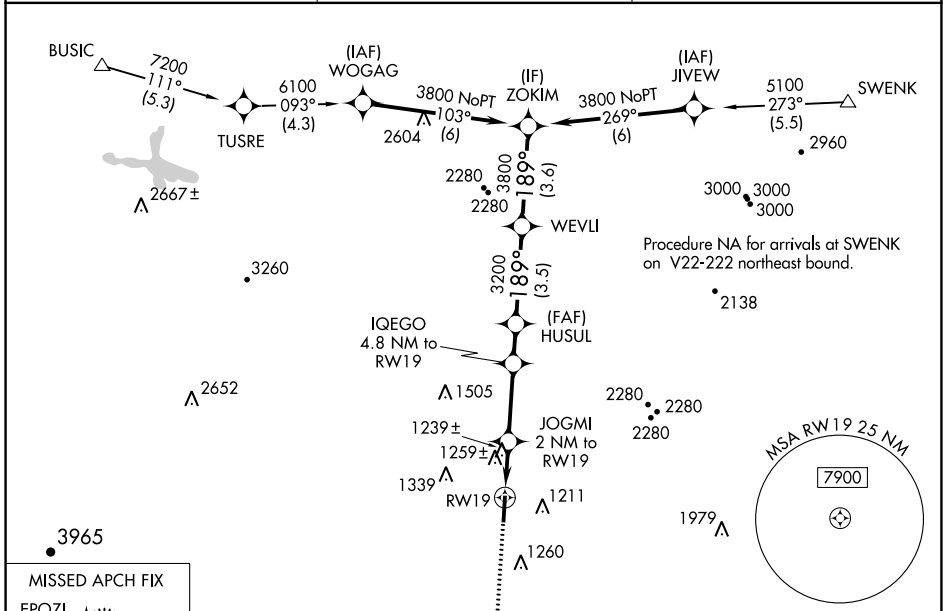
RNAV (GPS) RWY 19

RUTHERFORD COUNTY-MARCHMAN FIELD (FQD)

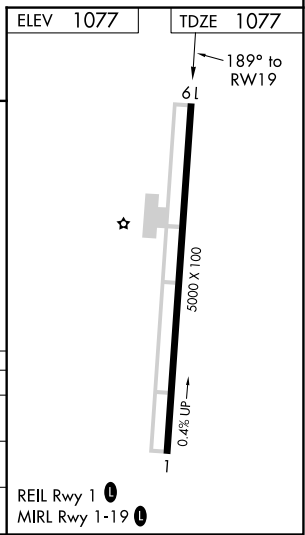
▼ DME/DME RNP-0.3 NA. When local altimeter setting not received, use Shelby-Cleveland County Rgnl altimeter setting and increase all MDA 80 feet and increase LP and LNAV Cat C and D ½ mile, increase Circling Cat C and D visibility ¼ mile. Rwy 19 helicopter visibility reduction below ¾ mile NA.

MISSED APPROACH:
Climb to 3000 direct EPOZI and hold.

AWOS-3 118.275	GREER APP CON ★ 119.4 350.2	UNICOM 122.8 (CTAF) 0
--------------------------	---------------------------------------	---------------------------------



CATEGORY	A	B	C	D
LP MDA	1500-1	423 (500-1)	1500-1¼	423 (500-1¼)
LNAV MDA	1520-1	443 (500-1)	1520-1⅓	443 (500-1⅓)
C CIRCLING	1560-1 483 (500-1)	1620-1 543 (600-1)	1640-1½ 563 (600-1½)	1820-2½ 743 (800-2½)



SE-2, 09 SEP 2021 to 07 OCT 2021

SE-2, 09 SEP 2021 to 07 OCT 2021