

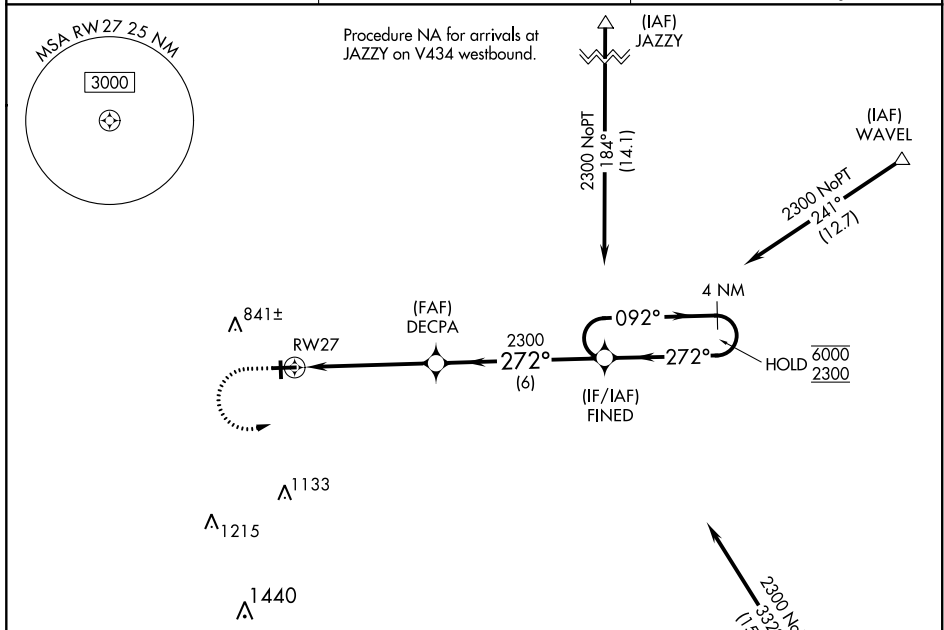
WAAS CH <b>61239</b> <b>W27A</b>	APP CRS <b>272°</b>	Rwy Idg TDZE Apt Elev	<b>4501</b> <b>651</b> <b>654</b>
--	------------------------	-----------------------------	---

# RNAV (GPS) RWY 27

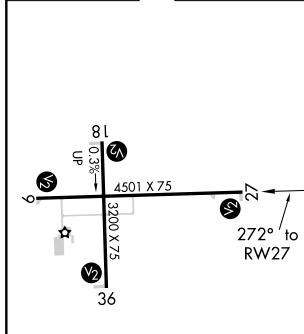
EDGAR COUNTY (PRG)

RNP APCH.	MISSED APPROACH: Climb to 1120 then climbing left turn to 2300 direct FINED and hold.
<b>⚠</b> Circling Rwy 18 NA at night. Rwy 27 helicopter visibility reduction below 3/4 SM NA. For uncompensated Baro-VNAV systems, LNAV/VNAV NA below -16°C or above 54°C.	

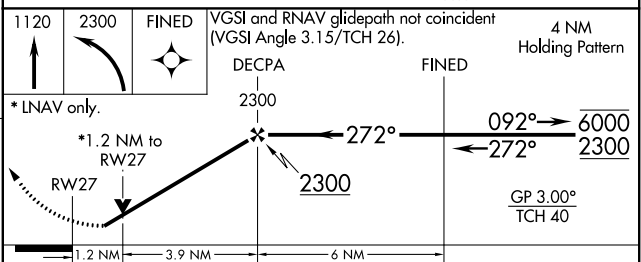
AWOS-3 <b>124,175</b>	HULMAN APP CON <b>125,45 339.8</b>	UNICOM <b>123.0 (CTAF) 0</b>
--------------------------	---------------------------------------	---------------------------------



ELEV <b>654</b>	TDZE <b>651</b>
-----------------	-----------------



Procedure NA for arrivals on TTH VORTAC airway radials 254 CW 303.



1120	2300	FINED	VGSI and RNAV glidepath not coincident (VGSI Angle 3.15/TCH 26).	
* LNAV only.		DECFA	FINED	4 NM Holding Pattern
*1.2 NM to RWY 27		2300	272°	092° → 6000
1.2 NM		3.9 NM	6 NM	← 272° 2300
				GP 3.00° TCH 40
CATEGORY	A	B	C	D
LPV DA	901-1 250 (300-1)			
LNAV/VNAV DA	925-1 274 (300-1)			
LNAV MDA	1080-1 429 (500-1)	1080-1¼ 429 (500-1¼)		
<b>ⓐ</b> CIRCLING	1080-1 426 (500-1)	1120-1 466 (500-1)	1200-1½ 546 (600-1½)	1320-2 666 (700-2)

EC-3, 09 SEP 2021 to 07 OCT 2021

EC-3, 09 SEP 2021 to 07 OCT 2021