

WAAS CH 78339 W36A	APP CRS 002°	Rwy Idg TDZE 654 Apt Elev 654	3200
--	------------------------	---	-------------

RNAV (GPS) RWY 36

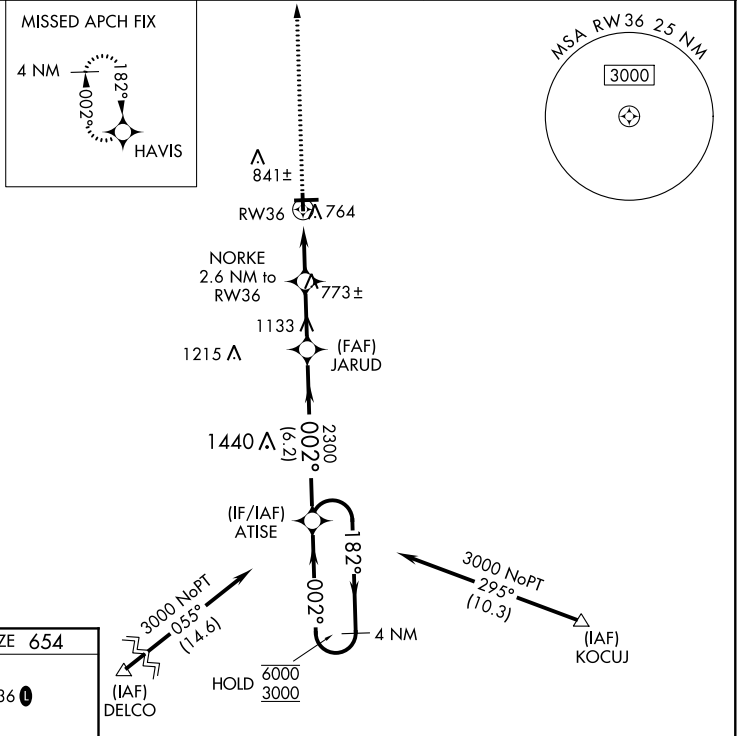
EDGAR COUNTY (PRG)

RNP APCH.

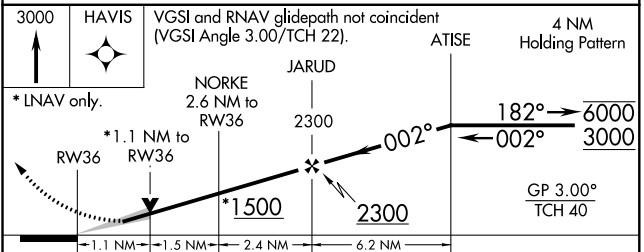
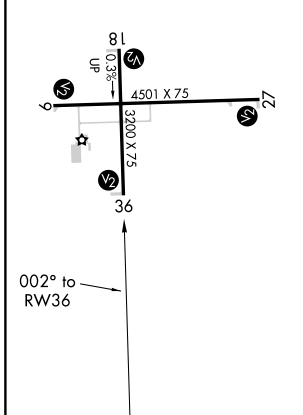
⚠ For uncompensated Baro-VNAV systems, procedure NA below -16°C or above 54°C.
⚠ Circling Rwy 18 NA at night.

MISSED APPROACH:
Climb to 3000 direct HAVIS and hold.

AWOS-3 124.175	HULMAN APP CON 125.45 339.8	UNICOM 123.0 (CTAF) ①
--------------------------	---------------------------------------	---------------------------------



ELEV 654	TDZE 654
REIL Rwy 27 MIRL Rwys 9-27 and 18-36 ①	



CATEGORY	A	B	C	D
LPV DA		904-1	250 (300-1)	
LNAV/VNAV DA		925-1	271 (300-1)	
LNAV MDA		1020-1	366 (400-1)	
CIRCLING	1080-1	1120-1	1200-1½	1320-2
	426 (500-1)	466 (500-1)	546 (600-1½)	666 (700-2)

EC-3, 09 SEP 2021 to 07 OCT 2021

EC-3, 09 SEP 2021 to 07 OCT 2021