

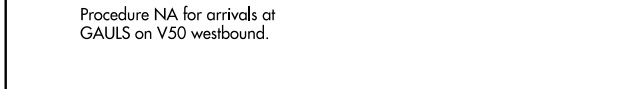
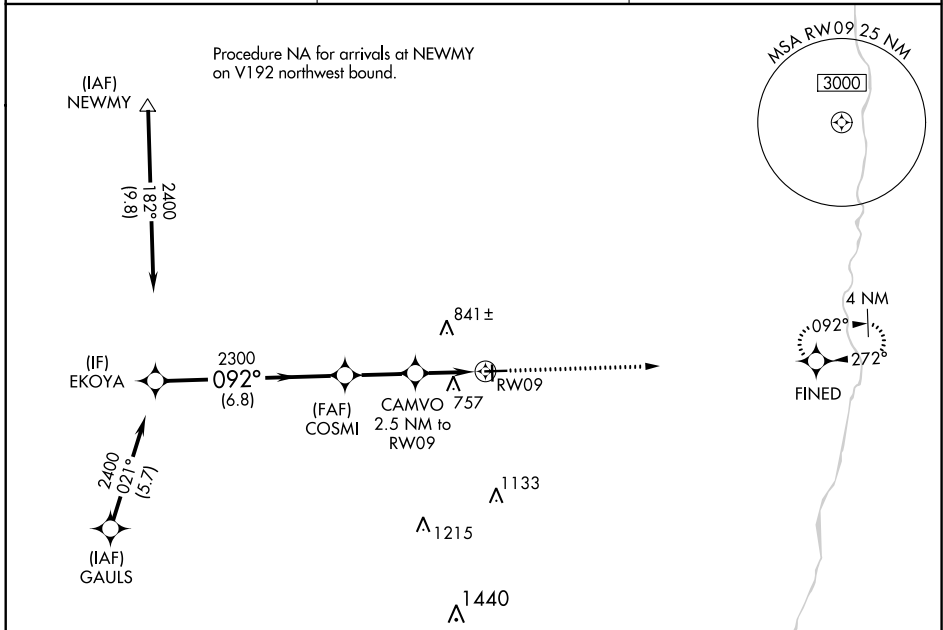
WAAS CH <b>50439</b> <b>W09A</b>	APP CRS <b>092°</b>	Rwy Idg TDZE <b>654</b> Apt Elev <b>654</b>
--	------------------------	---

# RNAV (GPS) RWY 9

EDGAR COUNTY (PRG)

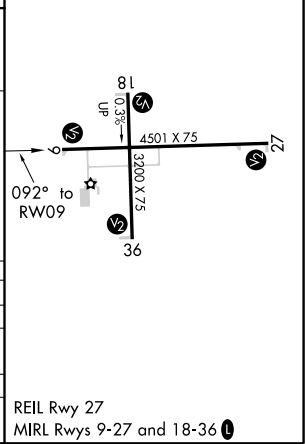
RNP APCH.	MISSED APPROACH: Climb to 2300 direct FINED and hold.
-----------	---

AWOS-3 <b>124.175</b>	HULMAN APP CON <b>125.45 339.8</b>	UNICOM <b>123.0 (CTAF) 0</b>
--------------------------	---------------------------------------	---------------------------------



ELEV 654	TDZE 654
----------	----------

CATEGORY	A	B	C	D
LPV DA	904-1 250 (300-1)			
LNAV/VNAV DA	908-1 254 (300-1)			
LNAV MDA	1020-1 366 (400-1)			
CIRCLING	1080-1 426 (500-1)	1120-1 466 (500-1)	1200-1½ 546 (600-1½)	1320-2 666 (700-2)



EC-3, 09 SEP 2021 to 07 OCT 2021

EC-3, 09 SEP 2021 to 07 OCT 2021