

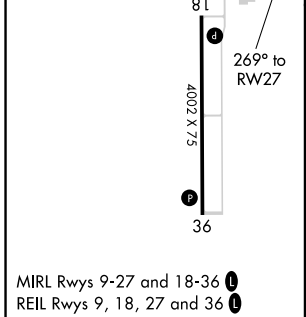
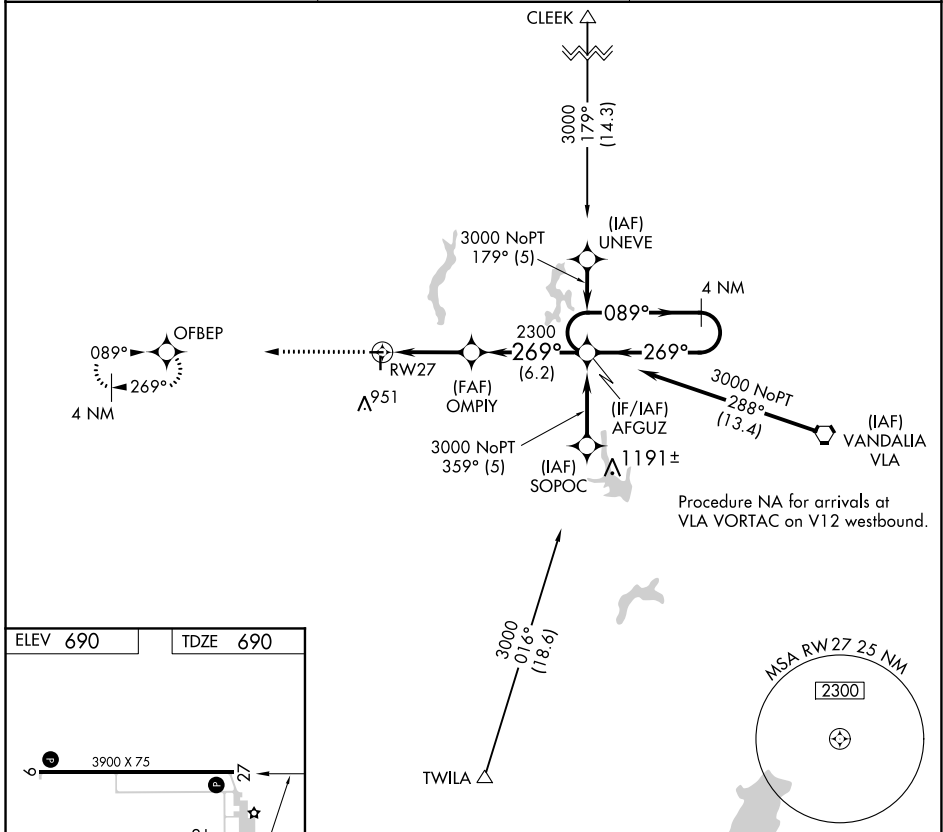
APP CRS	Rwy Idg	<b>3900</b>
<b>269°</b>	TDZE	<b>690</b>
	Apt Elev	<b>690</b>

# RNAV (GPS) RWY 27

LITCHFIELD MUNI (3LF)

RNP APCH.	MISSED APPROACH: Climb to 3000 direct OFBEP and hold.
<p><b>⚠</b> VDP NA with Taylorville altimeter setting. Rwy 27 helicopter visibility reduction below 3/4 SM NA. When local altimeter setting not received, use Taylorville altimeter setting and increase all MDA 80 feet and LNAV Cat C visibility to 1 3/8 SM.</p>	

AWOS-3 <b>118.175</b>	ST. LOUIS APP CON <b>124.2 353.9</b>	UNICOM <b>122.8 (CTAF) 0</b>
--------------------------	---	---------------------------------



3000	OFBEP	4 NM Holding Pattern		
1.3 NM to RWY 27	OMPY	AFGUZ		
≤ 3.04° TCH 57	2300	089° → 3000		
269°	← 269°	VGSI and descent angles not coincident (VGSI Angle 3.00/TCH 24).		
1.3	3.5 NM	6.2 NM		
CATEGORY	A	B	C	D
LNAV MDA	1120-1	430 (500-1)	1120-1 1/4 430 (500-1 1/4)	NA

EC-3, 09 SEP 2021 to 07 OCT 2021

EC-3, 09 SEP 2021 to 07 OCT 2021