

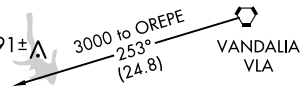
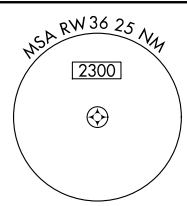
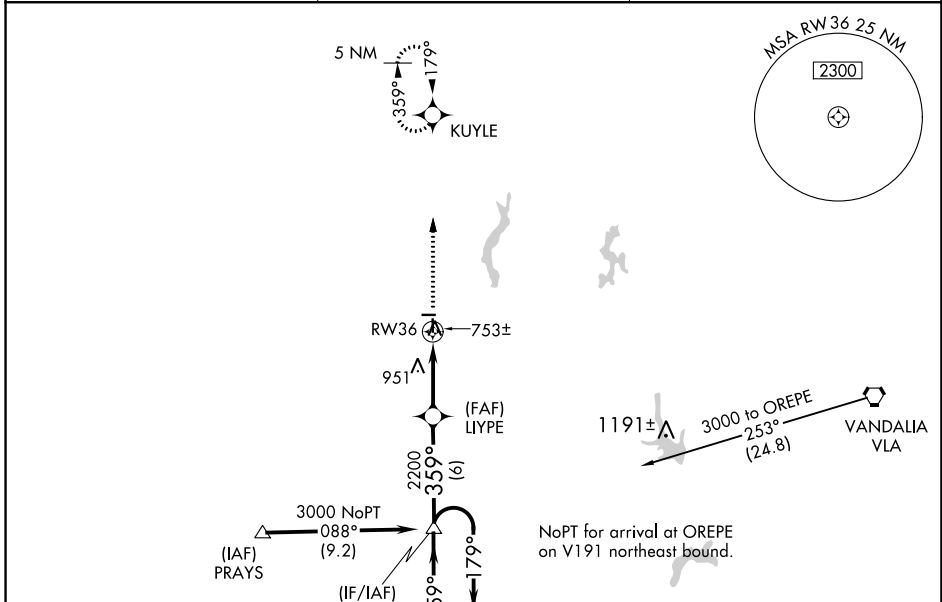
WAAS CH 40403 W36A	APP CRS 359°	Rwy Idg 4002 TDZE 682 Apt Elev 690
--	------------------------	---

RNAV (GPS) RWY 36

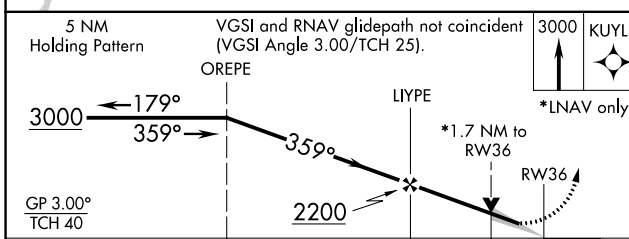
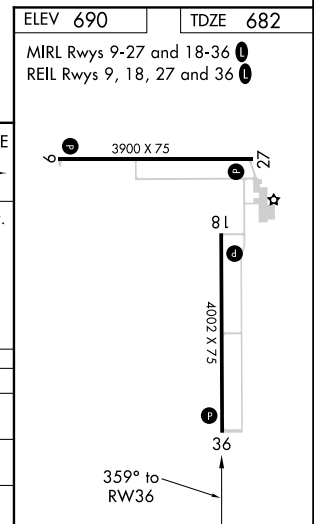
LITCHFIELD MUNI (3LF)

RNP APCH.	<p>▼ Baro-VNAV and VDP NA when using Taylorville altimeter setting. For uncompensated Baro-VNAV systems, LNAV/VNAV NA below -16°C or above 54°C. When local altimeter setting not received, use Taylorville altimeter setting and increase all DA 73 feet and all MDA 80 feet. Increase LNAV Cat C visibility to 1½ SM.</p>	<p>MISSED APPROACH: Climb to 3000 direct KUYLE and hold.</p>
-----------	---	--

AWOS-3 118.175	ST. LOUIS APP CON 124.2 353.9	UNICOM 122.8 (CTAF) 0
--------------------------	---	---------------------------------



NoPT for arrival at OREPE on V191 northeast bound.



CATEGORY	A	B	C	D
LPV DA	958-1 276 (300-1)			NA
LNAV/VNAV DA	1013-1¼ 331 (400-1¼)			NA
LNAV MDA	1260-1 578 (600-1)		1260-1⅝ 578 (600-1⅝)	

EC-3, 09 SEP 2021 to 07 OCT 2021

EC-3, 09 SEP 2021 to 07 OCT 2021