

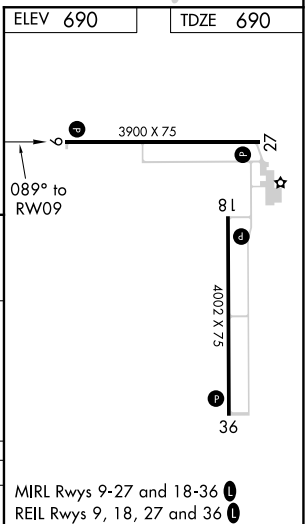
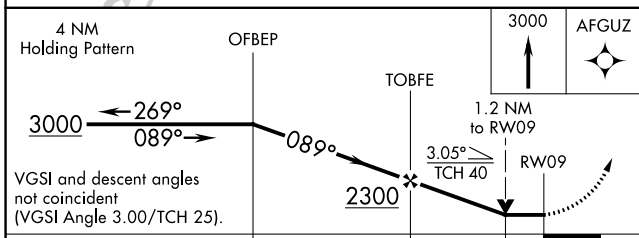
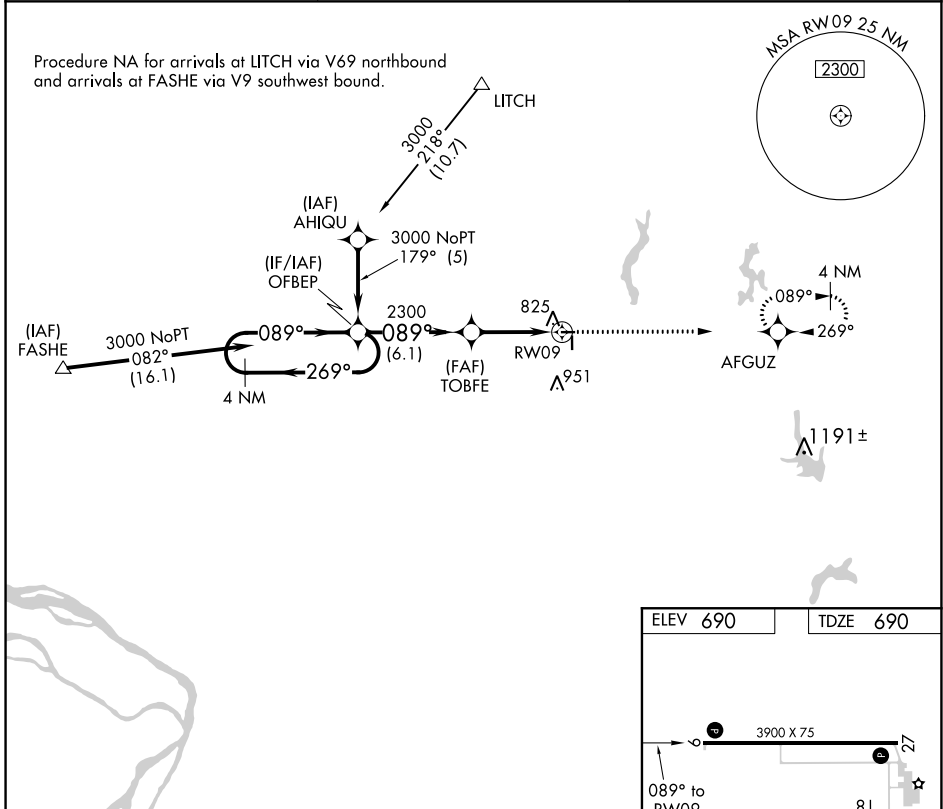
APP CRS	Rwy Idg	3900
089°	TDZE	690
	Apt Elev	690

RNAV (GPS) RWY 9

LITCHFIELD MUNI (3LF)

RNP APCH.	<p>⚠ When local altimeter setting not received, use Taylorville altimeter setting and increase all MDA 80 feet and LNAV Cat C visibility to 1½ SM. VDP NA with Taylorville altimeter setting. Rwy 9 helicopter visibility reduction below ¾ SM NA.</p>	MISSED APPROACH: Climb to 3000 direct AFGUZ and hold.
-----------	---	---

AWOS-3 118.175	ST. LOUIS APP CON 124.2 353.9	UNICOM 122.8 (CTAF) 0
--------------------------	---	---------------------------------



CATEGORY	A	B	C	D
LNAV MDA	1140-1	450 (500-1)	1140-1 3/8 450 (500-1 3/8)	NA

MIRL Rwy 9-27 and 18-36
REIL Rwy 9, 18, 27 and 36

EC-3, 09 SEP 2021 to 07 OCT 2021

EC-3, 09 SEP 2021 to 07 OCT 2021