

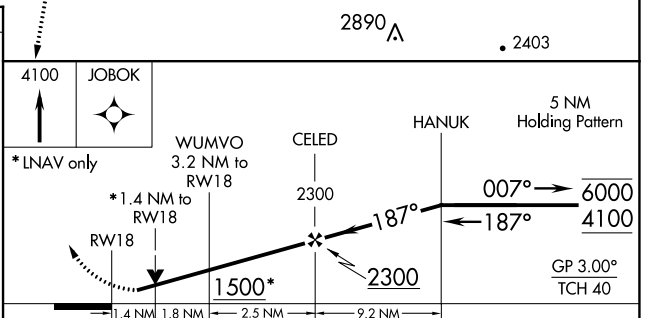
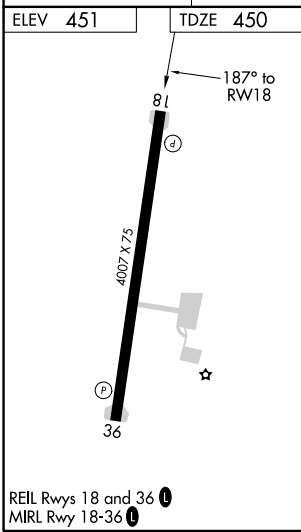
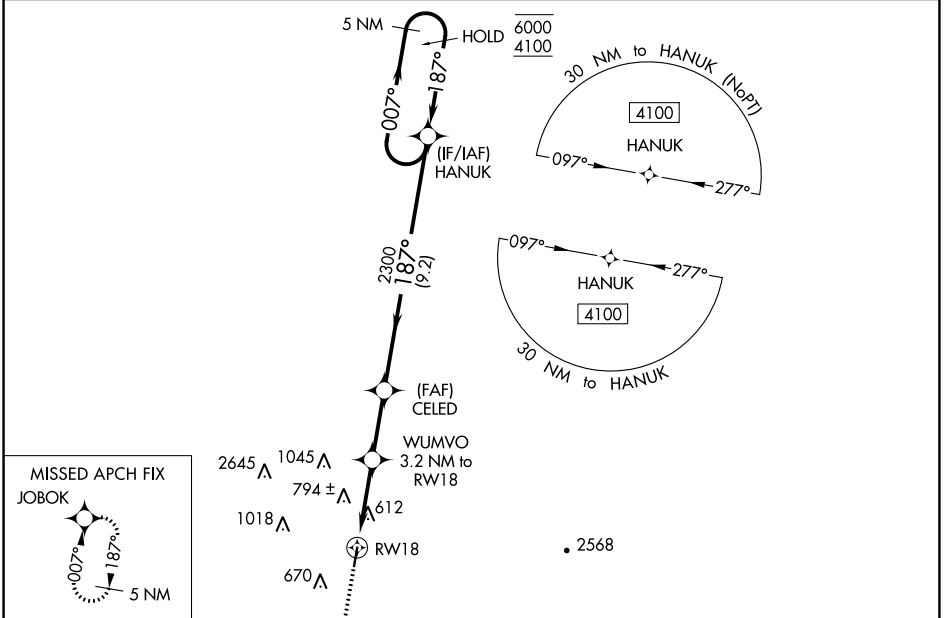
WAAS CH 56443 W18A	APP CRS 187°	Rwy Idg TDZE 450 Apt Elev 451	4007
--	------------------------	---	-------------

RNAV (GPS) RWY 18

ROBERT S KERR (RKR)

RNP APCH.	MISSED APPROACH: Climb to 4100 direct JOBOK and hold, continue climb-in-hold to 4100.
-----------	---

AWOS-3 120.625	RAZORBACK APP CON * 120.9 343.75	UNICOM 122.8 (CTAF) Q
--------------------------	--	--



CATEGORY	A	B	C	D
LPV DA		700-1	250 (300-1)	
LNAV/VNAV DA		926-1 $\frac{3}{8}$	476 (500-1 $\frac{3}{8}$)	
LNAV MDA	940-1	490 (500-1)	940-1 $\frac{3}{8}$	490 (500-1 $\frac{3}{8}$)
C CIRCLING	1000-1 549 (600-1)	1100-1 649 (700-1)	1100-1 $\frac{3}{4}$ 649 (700-1 $\frac{3}{4}$)	1160-2 $\frac{1}{4}$ 709 (800-2 $\frac{1}{4}$)

SC-1, 09 SEP 2021 to 07 OCT 2021

SC-1, 09 SEP 2021 to 07 OCT 2021