

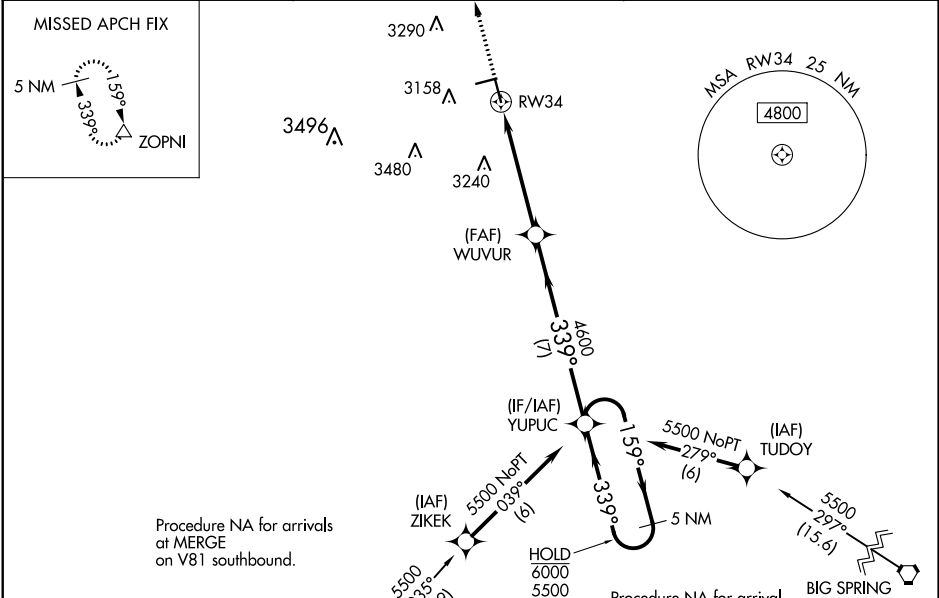
WAAS CH <b>56626</b> <b>W34A</b>	APP CRS <b>339°</b>	Rwy Idg TDZE Apt Elev	<b>5002</b> <b>2994</b> <b>2999</b>
--	------------------------	-----------------------------	---

# RNAV (GPS) RWY 34

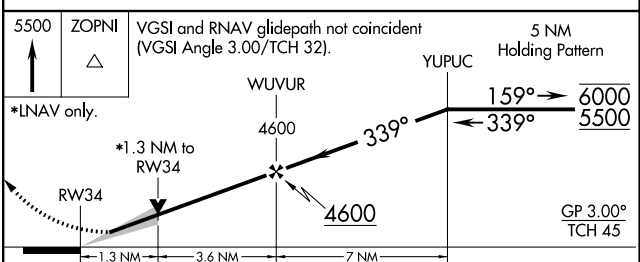
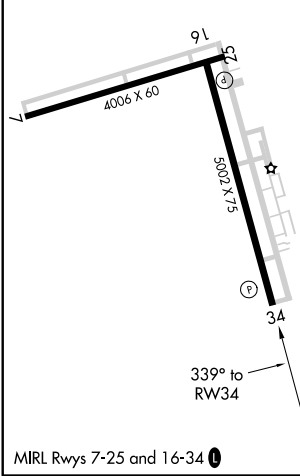
LAMESA MUNI (LUV)

RNP APCH.	MISSED APPROACH: Climb to 5500 direct ZOPNI and hold.
<p><b>⚠</b> Circling Rwy 7, 25 NA at night. For uncompensated Baro-VNAV systems, LNAV/VNAV NA below -20°C or above 54°C.</p>	

AWOS-3PT <b>124.175</b>	FORT WORTH CENTER <b>132.6 269.05</b>	UNICOM <b>122.8 (CTAF) 0</b>
----------------------------	--	---------------------------------



ELEV 2999	TDZE 2994
-----------	-----------



CATEGORY	A	B	C	D
LPV DA		3194- <sup>3</sup> / <sub>4</sub>	200 (200- <sup>3</sup> / <sub>4</sub> )	
LNAV/VNAV DA		3244- <sup>3</sup> / <sub>4</sub>	250 (300- <sup>3</sup> / <sub>4</sub> )	
LNAV MDA	3420-1	426 (500-1)	3420-1 <sup>1</sup> / <sub>4</sub>	426 (500-1 <sup>1</sup> / <sub>4</sub> )
<b>C</b> CIRCLING	3460-1	461 (500-1)	3700-2 701 (800-2)	3840-2 <sup>3</sup> / <sub>4</sub> 841 (900-2 <sup>3</sup> / <sub>4</sub> )

SC-2, 09 SEP 2021 to 07 OCT 2021

SC-2, 09 SEP 2021 to 07 OCT 2021