

| | | |
|-------------|----------|-------------|
| APP CRS | Rwy Idg | 4206 |
| 282° | TDZE | 665 |
| | Apt Elev | 665 |

RNAV (GPS) RWY 28

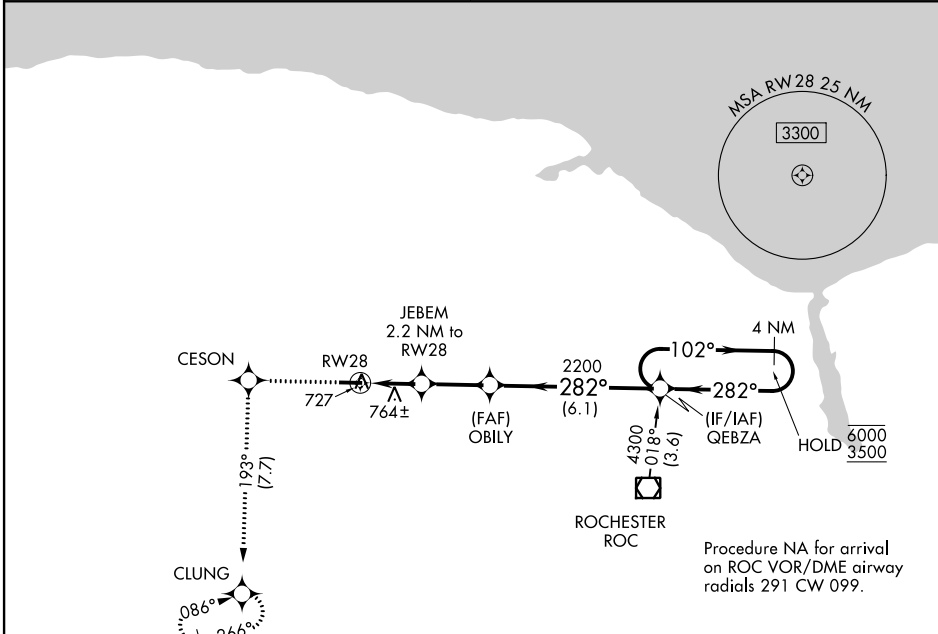
LEDGEDALE AIRPARK (7G0)

RNP APCH.
 ▼ Rwy 28 helicopter visibility reduction below 1 SM NA.
 ▲ NA Procedure NA at night.

MISSED APPROACH: Climb to 3500 direct CESON and on track 193° to CLUNG and hold, continue climb-in-hold to 3500.

ROCHESTER APP CON
123.7 322.3

UNICOM
122.7 (CTAF)



NE-2, 09 SEP 2021 to 07 OCT 2021

NE-2, 09 SEP 2021 to 07 OCT 2021

| | | | |
|---|--------|-------------|-------|
| 3500 | CESON | tr 193° | CLUNG |
| 1409 | | | 1420 |
| <p>JEBEM 2.2 NM to RW28</p> <p>OBILY</p> <p>3.00° TCH 59'</p> <p>282°</p> <p>102° → 6000</p> <p>← 282° 3500</p> <p>4 NM Holding Pattern</p> <p>QEBZA</p> <p>4206 X 75</p> <p>282° to RW28</p> | | | |
| CATEGORY | A | B | C |
| LNVA MDA | 1060-1 | 395 (400-1) | NA |
| CIRCLING | 1160-1 | 495 (500-1) | NA |

| | | | |
|------|-----|------|-----|
| ELEV | 665 | TDZE | 665 |
|------|-----|------|-----|