

GREENCASTLE, INDIANA

AL-6336 (FAA)

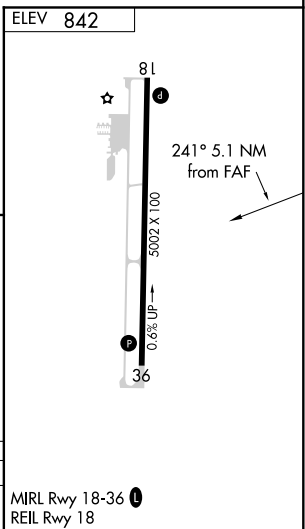
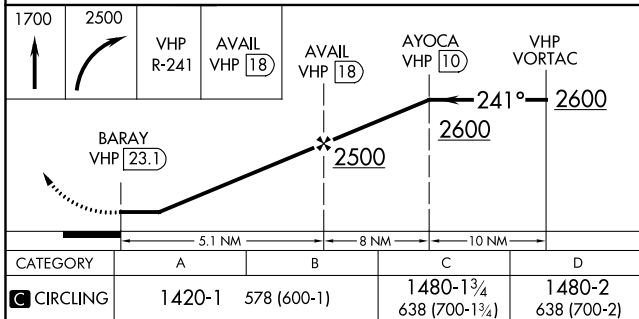
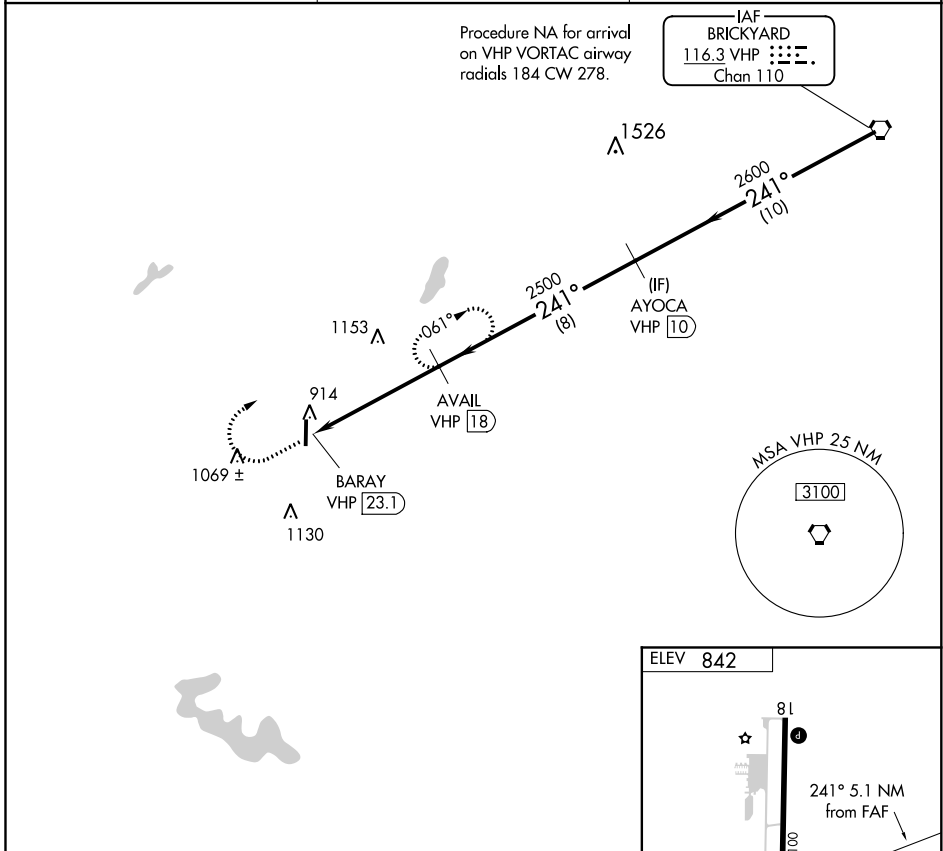
20310

VORTAC VHP 116.3 Chan 110	APP CRS 241°	Rwy Idg TDZE Apt Elev	N/A N/A 842
---	------------------------	-----------------------------	--

VOR-A
PUTNAM COUNTY RGNL (GPC)

▼ DME required.	MISSED APPROACH: Climb to 1700 then climbing right turn to 2500 on VHP VORTAC R-241 to AVAIL/18 DME and hold.
------------------------	---

AWOS-3PT 118.125	INDIANAPOLIS APP CON 119.05 317.8	UNICOM 122.8 (CTAF) 0
----------------------------	---	--



EC-2, 09 SEP 2021 to 07 OCT 2021

EC-2, 09 SEP 2021 to 07 OCT 2021

GREENCASTLE, INDIANA
Amdt 7 05JAN17

39°38'N-86°49'W

PUTNAM COUNTY RGNL (GPC)
VOR-A