

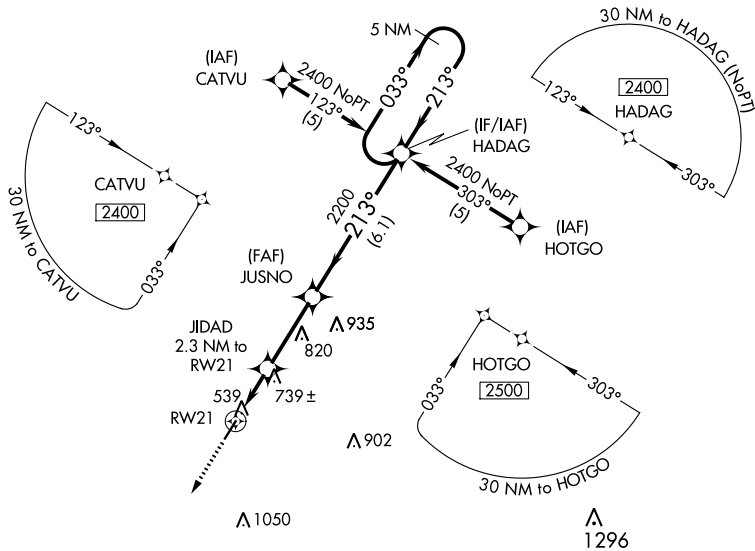
APP CRS	Rwy Idg	<b>4400</b>
<b>213°</b>	TDZE	<b>467</b>
	Apt Elev	<b>467</b>

# RNAV (GPS) RWY 21

RIPLEY (25M)

RNP APCH.		MISSED APPROACH: Climb to 2500 direct CEDAS and hold.
▼	Use Corinth altimeter setting; when not received, use Tupelo altimeter setting and increase all MDA 40 feet, and increase LNAV Cat C visibility 1/4 mile.	
▲ NA	Procedure NA at night. Rwy 21 helicopter visibility reduction below 1 SM NA.	

CRX AWOS-3PT <b>118.675</b>	MEMPHIS CENTER <b>135.9 260.6</b>	UNICOM <b>122.8 (CTAF) 0</b>
--------------------------------	--------------------------------------	---------------------------------



SC-4, 09 SEP 2021 to 07 OCT 2021

SC-4, 09 SEP 2021 to 07 OCT 2021

ELEV 467	TDZE 467
----------	----------

Final approach details:  
 - RWY 21: 213°  
 - 5 NM Holding Pattern  
 - 0.18% Up  
 - 4400 X 75  
 - MIRL Rwy 3-21 0

2500	CEDAS	VGSI and descent angles not coincident. (VGSI Angle 3.50/TCH 16)	5 NM Holding Pattern
↑	★		
RWY 21	JIDAD 2.3 NM to RWY 21	JUSNO	HADAG
	≤ 3.04° TCH 40	2200	2400
	1220		
	2.3 NM	2.9 NM	6.1 NM

CATEGORY	A	B	C	D
LNAV MDA	1060-1	593 (600-1)	1060-1½ 593 (600-1½)	NA