

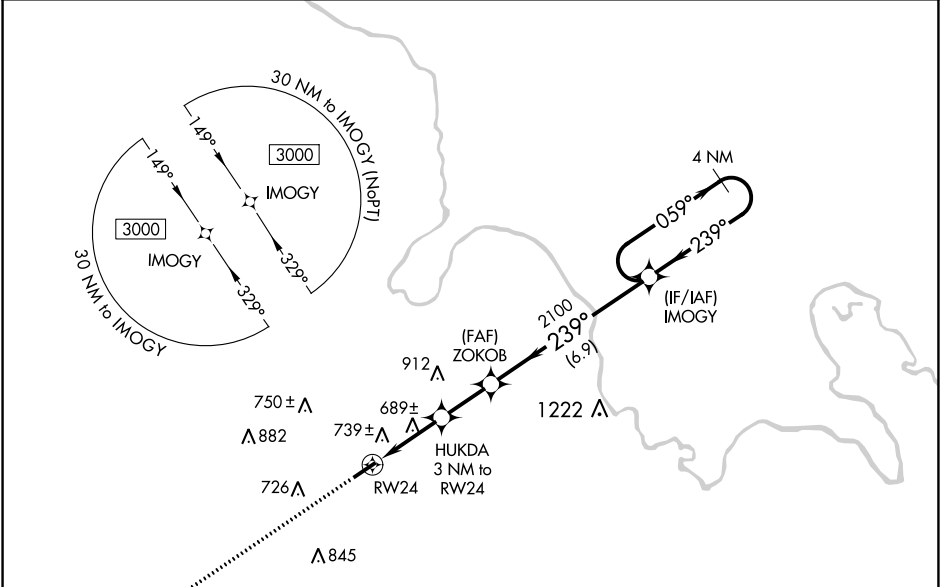
WAAS CH <b>99627</b> <b>W24A</b>	APP CRS <b>239°</b>	Rwy Idg <b>4600</b> TDZE <b>428</b> Apt Elev <b>428</b>
--	------------------------	---

# RNAV (GPS) RWY 24

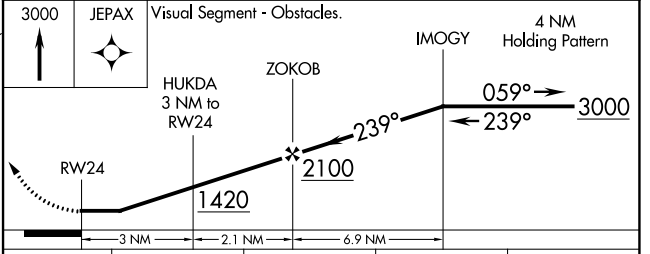
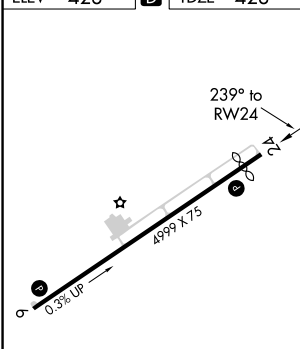
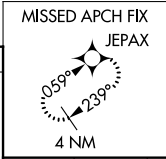
MUHLENBERG COUNTY (M21)

RNP APCH.	DME/DME RNP-0.3 NA. When local altimeter setting not received, use Owensboro altimeter setting and increase all MDAs 80 feet. Increase LP Cats C/D visibility $\frac{3}{8}$ SM and LNAV Cats C/D and Circling Cats C/D visibility $\frac{1}{4}$ SM. Procedure NA at night. Rwy 24, helicopter visibility reduction below 1 SM NA.	MISSED APPROACH: Climb to 3000 direct JEPAX and hold.
-----------	---	--

AWOS-3 <b>120.45</b>	CAMPBELL APP CON ★ <b>118.1 269.525</b>	UNICOM <b>123.0 (CTAF)</b>
-------------------------	--	-------------------------------



ELEV 428	<b>D</b>	TDZE 428
----------	----------	----------



CATEGORY	A	B	C	D
LP MDA	940-1	512 (600-1)	940-1 $\frac{3}{8}$	512 (600-1 $\frac{1}{8}$ )
LNAV MDA	1000-1	572 (600-1)	1000-1 $\frac{5}{8}$	572 (600-1 $\frac{5}{8}$ )
<b>C</b> CIRCLING	1040-1 612 (700-1)	1080-1 652 (700-1)	1180-2 $\frac{1}{4}$ 752 (800-2 $\frac{1}{4}$ )	1200-2 $\frac{1}{2}$ 772 (800-2 $\frac{1}{2}$ )

MIRL Rwy 6-24 **1**  
REIL Rwy 6 and 24 **1**

SE-1, 09 SEP 2021 to 07 OCT 2021

SE-1, 09 SEP 2021 to 07 OCT 2021