

|  |                        |   |
|--|------------------------|---|
| WAAS<br>CH <b>56527</b><br><b>W06A</b> | APP CRS<br><b>059°</b> | Rwy Idg <b>4999</b><br>TDZE <b>420</b><br>Apt Elev <b>428</b> |
|--|------------------------|---|

# RNAV (GPS) RWY 6

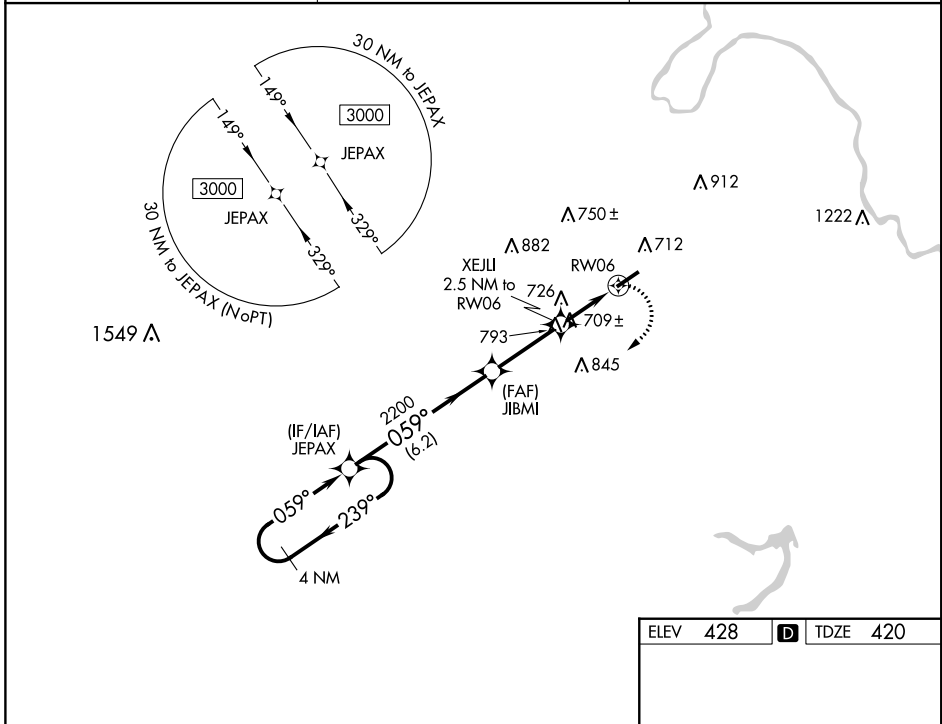
MUHLENBERG COUNTY (M21)

RNP APCH

▼ When local altimeter setting not received, use Owensboro altimeter setting and increase all MDA 80 feet. Increase LP Cats C/D visibility  $\frac{1}{8}$  mile, LNAV Cat B and Circling Cats B/D visibility  $\frac{1}{4}$  mile, and LNAV Cats C/D and Circling Cat C visibility  $\frac{1}{2}$  mile. Rwy 6, helicopter visibility reduction below  $\frac{3}{4}$  SM NA.

MISSED APPROACH:  
Climbing right turn to 3000 direct JEPAX and hold.

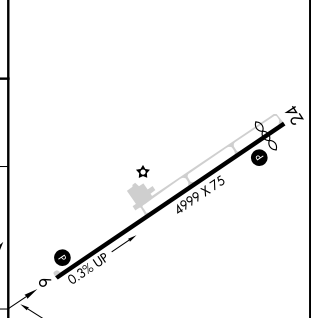
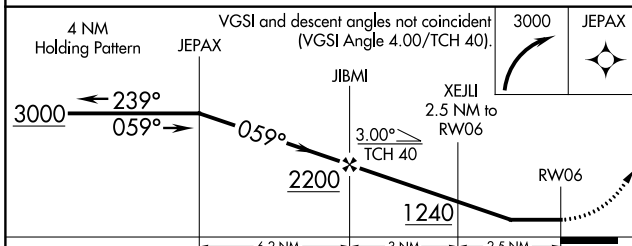
|                         |  |                                 |
|-------------------------|--|---------------------------------|
| AWOS-3<br><b>120.45</b> | CAMPBELL APP CON *<br><b>118.1 269.525</b> | UNICOM<br><b>123.0 (CTAF) 0</b> |
|-------------------------|--|---------------------------------|



SE-1, 09 SEP 2021 to 07 OCT 2021

SE-1, 09 SEP 2021 to 07 OCT 2021

|          |          |          |
|----------|----------|----------|
| ELEV 428 | <b>D</b> | TDZE 420 |
|----------|----------|----------|



| CATEGORY          | A      | B           | C  | D  |
|-------------------|--------|-------------|--|--|
| LP MDA            | 960-1  | 540 (600-1) | 960-1 $\frac{5}{8}$                                | 540 (600-1 $\frac{5}{8}$ )                         |
| LNAV MDA          | 1100-1 | 680 (700-1) | 1100-2   | 680 (700-2)  |
| <b>C</b> CIRCLING | 1100-1 | 672 (700-1) | 1180-2 $\frac{1}{4}$<br>752 (800-2 $\frac{1}{4}$ ) | 1200-2 $\frac{1}{2}$<br>772 (800-2 $\frac{1}{2}$ ) |

MIRL Rwy 6-24 0  
REIL Rwy 6 and 24 0