

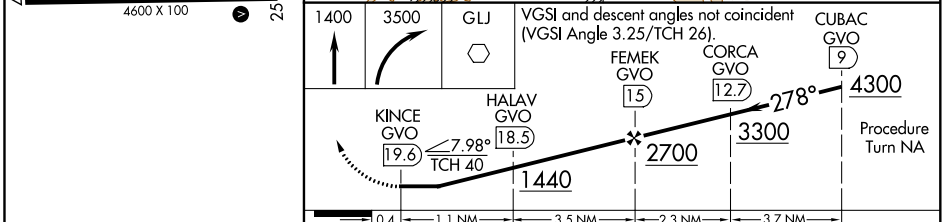
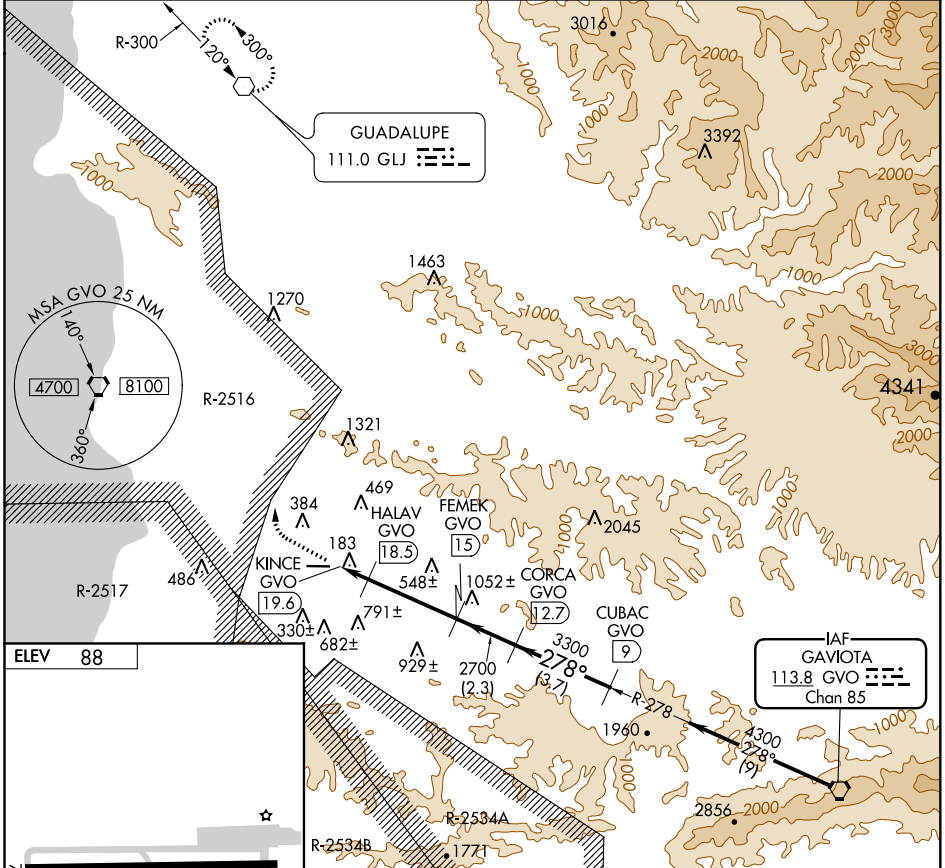
VORTAC GVO <b>113.8</b> Chan 85	APP CRS <b>278°</b>	Rwy Idg TDZE Apt Elev	<b>N/A</b> <b>N/A</b> <b>88</b>
---------------------------------------	------------------------	-----------------------------	---------------------------------------

# VOR/DME-A LOMPOC (LPC)

**Procedure NA at night.**

**MISSED APPROACH:** Climb to 1400, then climbing right turn to 3500 direct GLJ VOR and hold.

AWOS-3PT <b>133.875</b>	SANTA BARBARA APP CON* <b>124.15 327.8</b>	UNICOM <b>122.7 (CTAF)</b>
----------------------------	---	-------------------------------



REIL Rwy 25	MIRL Rwy 7-25	CATEGORY		A	B	C	D
		CIRCLING	1340-1¼	1340-1½	NA		
			1252 (1300-1¼)	1252 (1300-1½)			

SW-3, 09 SEP 2021 to 07 OCT 2021

SW-3, 09 SEP 2021 to 07 OCT 2021