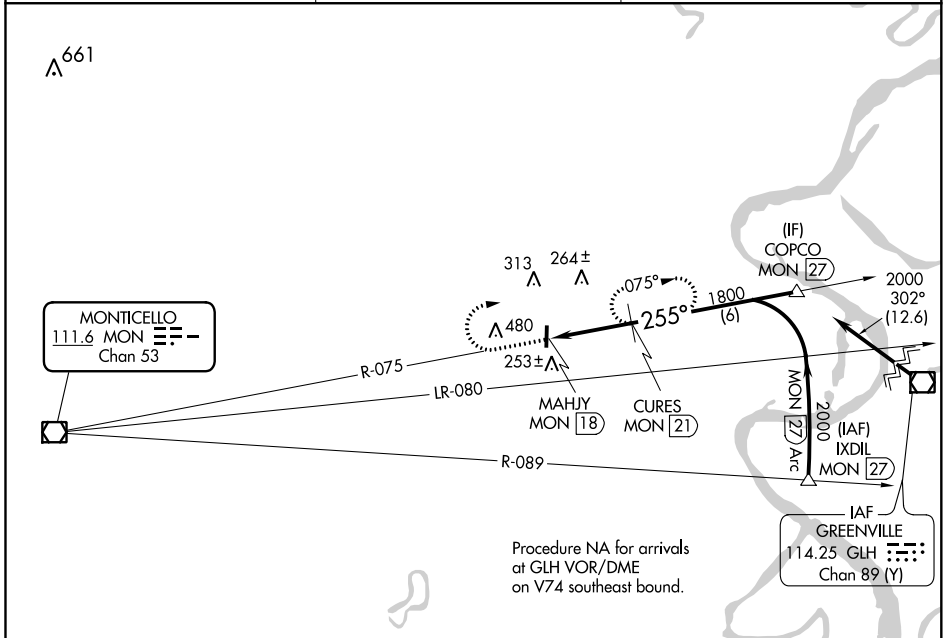


VOR/DME MON 111.6 Chan 53	APP CRS 255°	Rwy ldg TDZE Apt Elev N/A N/A 141
---	------------------------	---

VOR/DME-A
MC GEHEE MUNI (7M1)

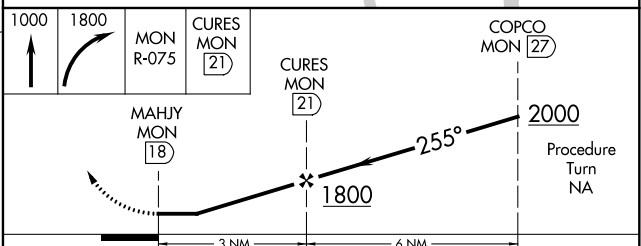
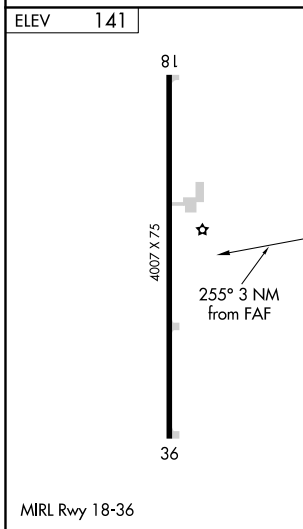
∇ Circling NA West of Rwy 18-36. Use Greenville, MS altimeter setting; when not received use Monticello altimeter setting and increase all MDA 20 feet and increase Cat C visibility ¼ mile. Procedure NA at night.
Δ NA MISSED APPROACH: Climb to 1000 then climbing right turn to 1800 on MON VOR/DME R-075 to CURES/MON 21 DME and hold.

GLH ASOS 125.525	MEMPHIS CENTER 135.875 269.35	CTAF 122.9
----------------------------	---	----------------------



SC-1, 09 SEP 2021 to 07 OCT 2021

SC-1, 09 SEP 2021 to 07 OCT 2021



CATEGORY	A	B	C	D
CIRCLING	800-1	659 (700-1)	800-1¾ 659 (700-1¾)	NA