

WAAS CH 72827 W09A	APP CRS 088°	Rwy Idg TDZE Apt Elev	4218 1021 1021
--	------------------------	-----------------------------	---

RNAV (GPS) RWY 9

UNION COUNTY (M.R.T)

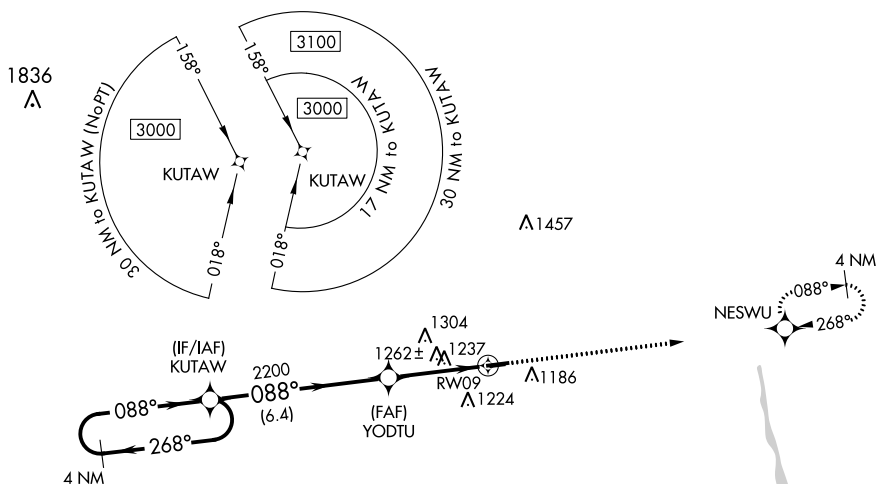
⚠ When VGSI inop, procedure NA at night. DME/DME RNP-0.3 NA. Visibility reduction by helicopters NA. When local altimeter setting not received, use John Glenn Columbus Intl altimeter setting and increase all MDA 100 feet, LP Cats C and D visibility to 1½ miles, LNAV Cats C and D and Circling Cat C visibility to ¾ miles.

MISSED APPROACH: Climb to 3000 direct NESWU and hold.

AWOS-3
119.275

COLUMBUS APP CON
125.95 317.775

UNICOM
122.8 (CTAF)

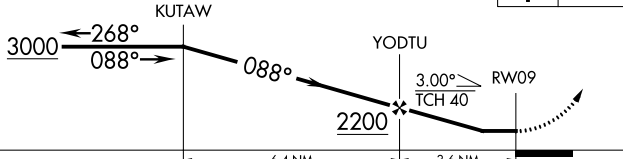


EC-2, 09 SEP 2021 to 07 OCT 2021

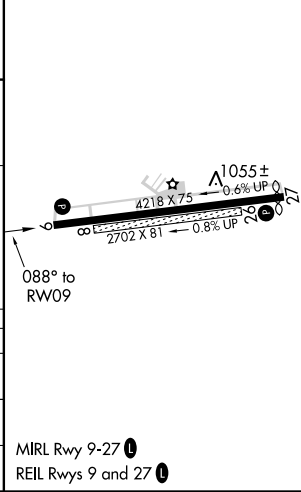
EC-2, 09 SEP 2021 to 07 OCT 2021

ELEV 1021	TDZE 1021
-----------	-----------

4 NM Holding Pattern VGSI and descent angles not coincident (VGSI Angle 3.00/TCH 25).



CATEGORY	A	B	C	D
LP MDA	1500-1	479 (500-1)	1500-1¾	479 (500-1¾)
LNAV MDA	1520-1	499 (500-1)	1520-1¾	499 (500-1¾)
CIRCLING	1520-1 499 (500-1)	1540-1 519 (600-1)	1540-1½ 519 (600-1½)	1580-2 559 (600-2)



MIRL Rwy 9-27
REIL Rwys 9 and 27