

APP CRS	Rwy Idg	2994
057°	TDZE	87
	Apt Elev	87

RNAV (GPS) RWY 6

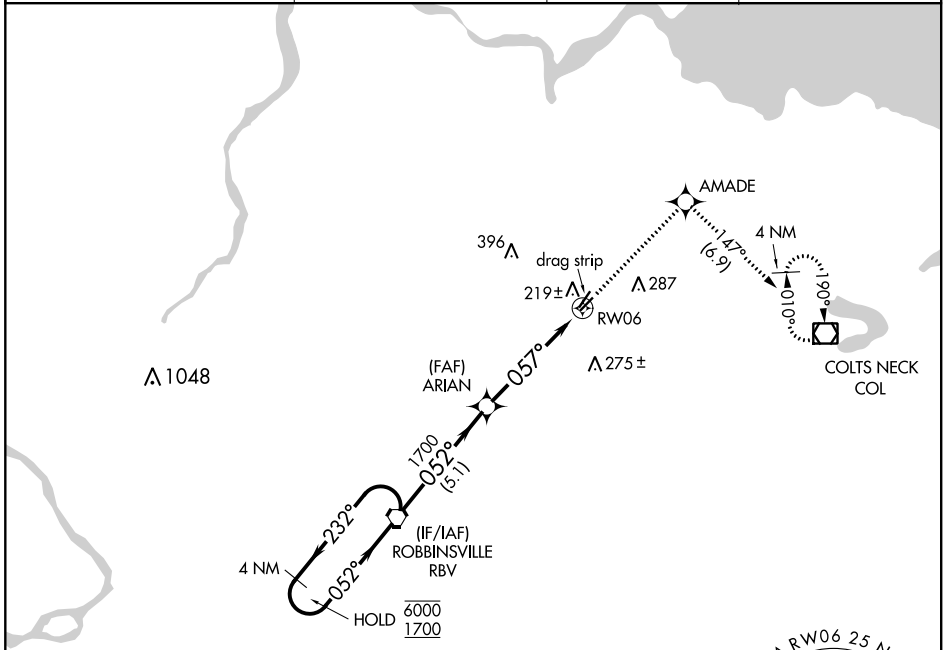
OLD BRIDGE (3N6)

RNP APCH.

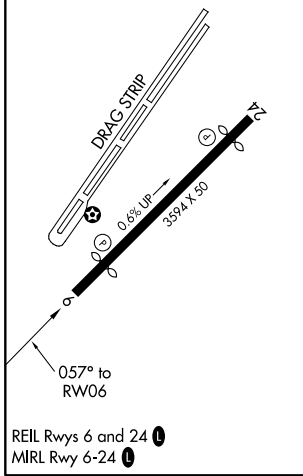
▼ Procedure NA at night. Rwy 6 helicopter visibility reduction below 1 SM NA.
▲ NA Use Belmar/Farmingdale altimeter setting; when not received, use Wrightstown altimeter setting and increase all MDA 20 feet.

MISSED APPROACH: Climb to 2000 direct AMADE and on track 147° to COL VOR/DME and hold.

BLM AWOS-3PT 121.625	MC GUIRE APP CON 126.475 363.8	GCO 121.725	UNICOM 123.075 (CTAF) 📻
--------------------------------	--	-----------------------	--



ELEV 87	TDZE 87
----------------	----------------



REIL Rwy 6 and 24 **📻**
 MIRL Rwy 6-24 **📻**

NoPT for arrival on RBV VORTAC airway radials 238 CW 289.

MSA R W06 2.5 NM
2900

Visual Segment - Obstacles.				2000	AMADE	tr 147°	COL
4 NM Holding Pattern				↑	✦		📻
RBV VORTAC				ARIAN			
6000 ← 232°				→ 052° → 1700			
				← 057° → RWY 6			
				5.1 NM		4.9 NM	
CATEGORY	A	B	C	D			
LNAV MDA	660-1 573 (600-1)			NA			

OLD BRIDGE, NEW JERSEY
 Orig-C 15AUG19

40°20'N-74°21'W

RNAV (GPS) RWY 6

OLD BRIDGE (3N6)

NE-2, 09 SEP 2021 to 07 OCT 2021

NE-2, 09 SEP 2021 to 07 OCT 2021