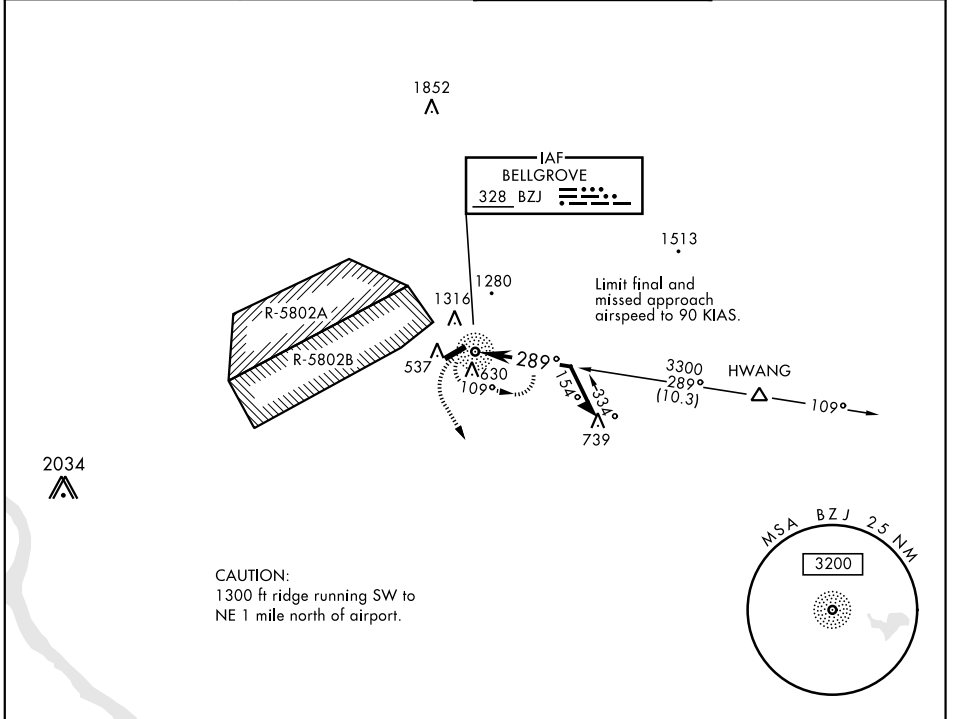


NDB BZJ <b>328</b>	APCH CRS <b>289°</b>	Rwy ldg TDZE Arprt Elev <b>N/A</b> <b>487</b>	AL-6422 [USA]	MUIR AAF (KMUI)
-----------------------	-------------------------	--	---------------	-----------------

⚠ When local altimeter setting not received, use Harrisburg INTL altimeter setting and increase MDA 80 ft.  
⚠ Proceed VFR from BZJ NDB or conduct the specified missed approach.

**MISSED APPROACH:** Climb to 2000 via heading 160° then climbing left turn to 2900 direct BZJ NDB and hold.

ASOS <b>124.175</b>	HARRISBURG APP CON <b>118.25 269.45</b>	MUIR TOWER ★ <b>126.2 (CTAF) 0 290.5</b>	GND CON <b>121.625 269.525</b>
------------------------	--	---	-----------------------------------



CATEGORY	COPTER		
H-289°	1040- $\frac{3}{4}$	501	(600- $\frac{3}{4}$ )

Rwy 7 ldg 3631'  
 Rwy 25 ldg 3860'  
 MIRL Rwy 7-25  
 REIL all Rwy

NE-4, 09 SEP 2021 to 07 OCT 2021

NE-4, 09 SEP 2021 to 07 OCT 2021