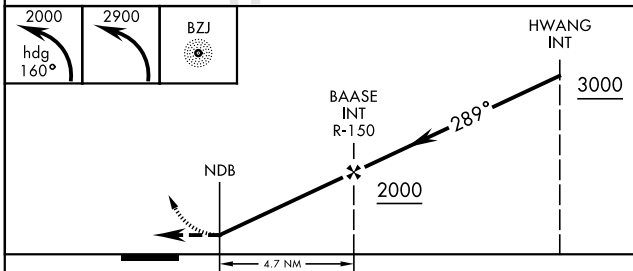
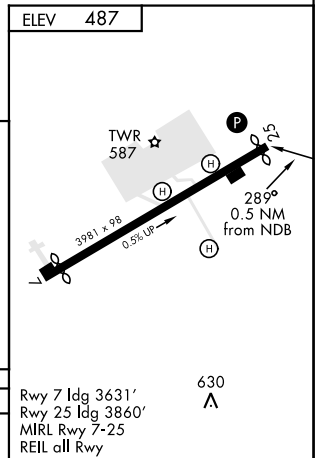
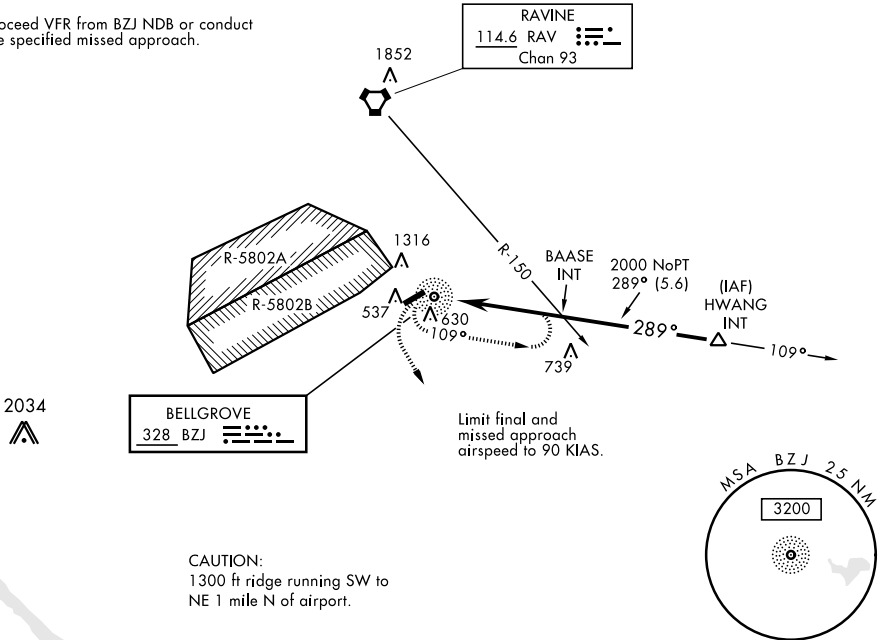


NDB BZJ <b>328</b>	APCH CRS <b>289°</b>	Rwy ldg TDZE Arprt Elev <b>N/A</b> <b>487</b>	AL-6422 [USA]	MUIR AAF (KMUI)
▼ VOR receiver required for this approach. When local altimeter setting not received, use Harrisburg INTL altimeter setting and increase MDA 80 ft.		MISSED APPROACH: Climb to 2000 via heading 160° then climbing left turn to 2900 direct BZJ NDB and hold.		
ASOS <b>124.175</b>	HARRISBURG APP CON <b>118.25 269.45</b>	MUIR TOWER ★ <b>126.2 (CTAF) 0 290.5</b>	GND CON <b>121.625 269.525</b>	

Procedure NA for arrivals at HWANG INT via V162 eastbound and V170 southeast bound.

Proceed VFR from BZJ NDB or conduct the specified missed approach.



CATEGORY	COPTER	
H-289°	1000-3/4	461 (500-3/4)

NE-4, 09 SEP 2021 to 07 OCT 2021

NE-4, 09 SEP 2021 to 07 OCT 2021