

FORT INDIANTOWN GAP, PENNSYLVANIA

RNAV (GPS)-B

APCH CRS 054°	Rwy Idg TDZE Arprt Elev	N/A N/A 487
-------------------------	-------------------------------	--------------------------

AL-6422 (USA)

MUIR AAF (KMUI)

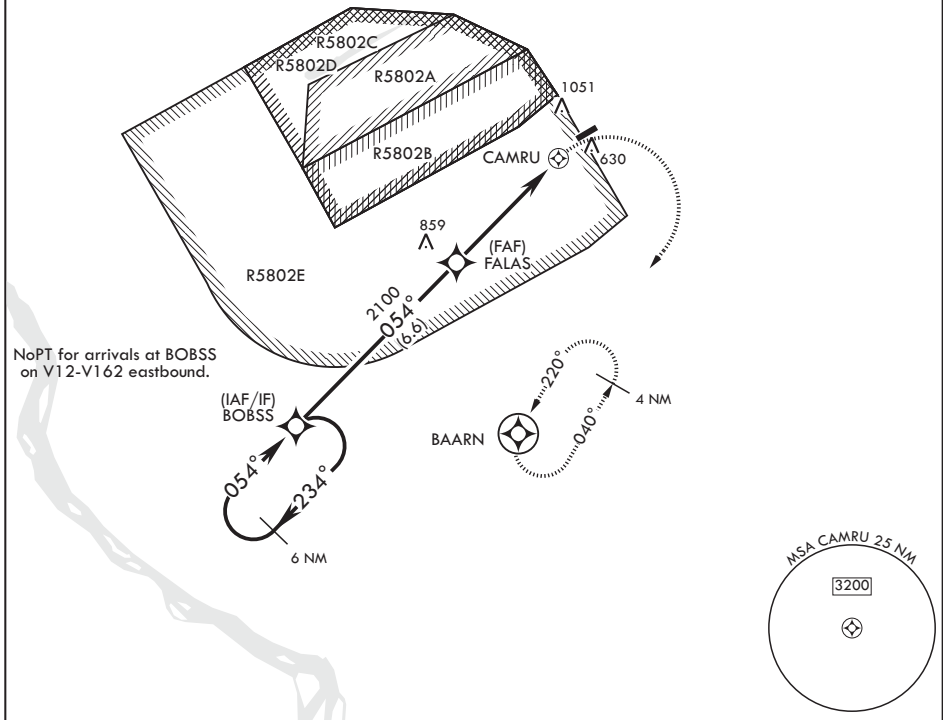
⚠ Circling N of Rwy 7-25 not authorized.
 DME/DME RNP-0.3 NA
 ⚠ Helicopter visibility reduction below 1 SM NA.

MISSED APPROACH: Climbing right turn to 3100 direct BAARN and hold.

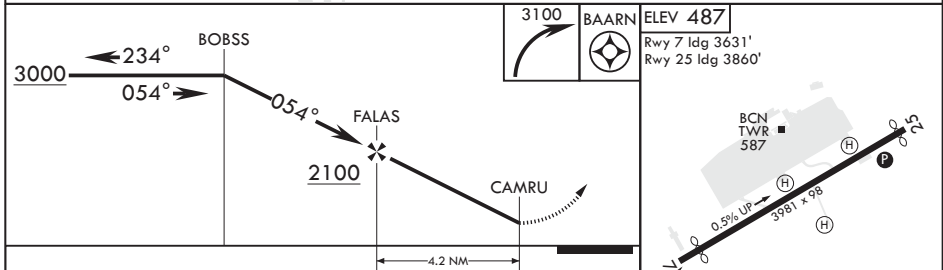
ASOS 124.175	HARRISBURG APP CON/DEP CON 118.25 269.45	TOWER* 126.2 (CTAF) 290.5	GND CON 121.625 269.525
------------------------	--	-------------------------------------	-----------------------------------

When local altimeter setting not received, use Harrisburg Intl altimeter setting: increase all MDA 80 feet and CAT BC vis 1/4 SM.

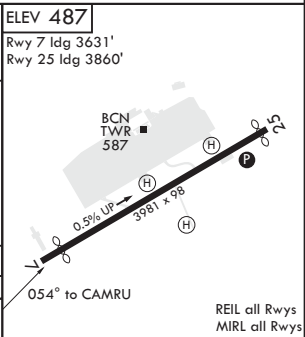
1775



NoPT for arrivals at BOBSS on V12-V162 eastbound.



CATEGORY	A	B	C	D
C CIRCLING	1420-1¼ 933	(1000-1¼)	1420-2¾ 933 (1000-2¾)	NA



REIL all Rwys
MIRL all Rwys

FORT INDIANTOWN GAP, PENNSYLVANIA

40°26'N - 76°34'W

MUIR AAF (KMUI)

Amdt 2A 10SEP20

RNAV (GPS)-B

NE-4, 09 SEP 2021 to 07 OCT 2021

NE-4, 09 SEP 2021 to 07 OCT 2021