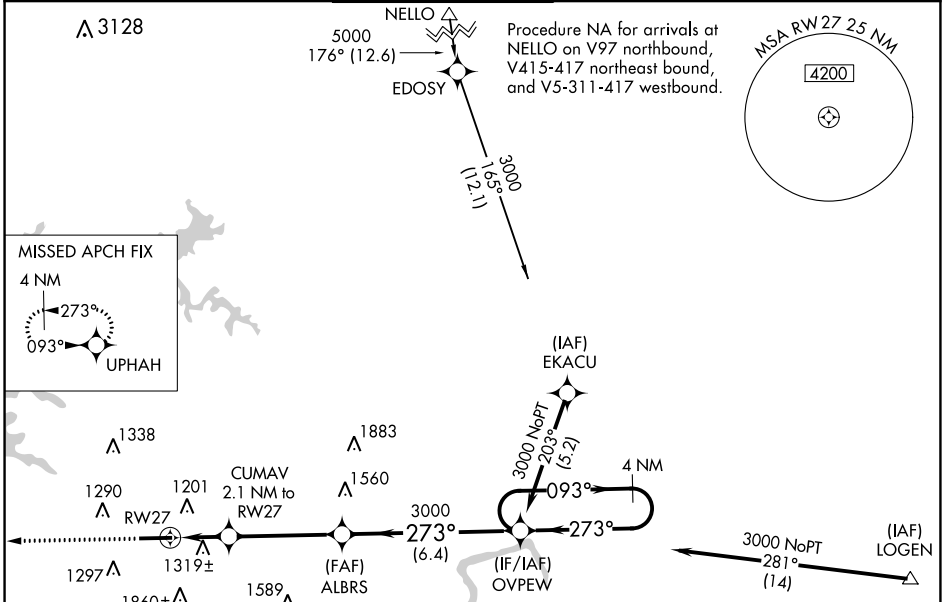


WAAS CH 97308 W27A	APP CRS 273°	Rwy Idg TDZE 1011 Apt Elev 1040
--	------------------------	---

RNAV (GPS) RWY 27

COBB COUNTY INTL-MCCOLLUM FLD (RYY)

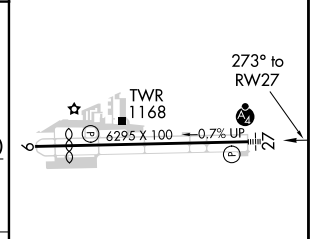
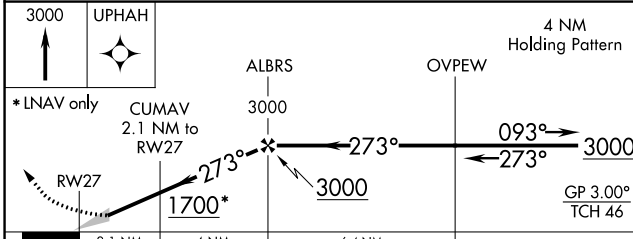
<p>▼ Baro-VNAV NA when using Hartsfield-Jackson Atlanta Intl altimeter setting. ▲ For uncompensated Baro-VNAV systems, LNAV/VNAV NA below -17°C (2°F) or above 37°C (98°F). DME/DME RNP-0.3 NA. When local altimeter setting not received, use Hartsfield-Jackson Atlanta Intl altimeter setting and increase all DA/MDA 60 feet; increase LPV all Cats and LNAV Cats C and D visibility 1/8 mile; increase Circling Cat C visibility 1/4 mile.</p>		<p>MALSF</p>	<p>MISSED APPROACH: Climb to 3000 direct UPHAH and hold.</p>		
ATIS 128.125	ATLANTA APP CON 121.0 268.7	MCCOLLUM TOWER ★ 125.9 (CTAF) 0	GND CON 119.0	CLNC DEL 119.0 268.7	UNICOM 122.7



SE-4, 09 SEP 2021 to 07 OCT 2021

SE-4, 09 SEP 2021 to 07 OCT 2021

ELEV 1040	TDZE 1011
-----------	-----------



CATEGORY	A	B	C	D
LPV DA		1211-3/4	200 (200-3/4)	
LNAV/VNAV DA		1680-2 1/2	669 (700-2 1/2)	
LNAV MDA	1580-1	569 (600-1)	1580-1 3/4	569 (600-1 3/4)
CIRCLING	1780-1	740 (800-1)	1780-2	2220-3
			740 (800-2)	1180 (1200-3)

HIRL Rwy 9-27 0