

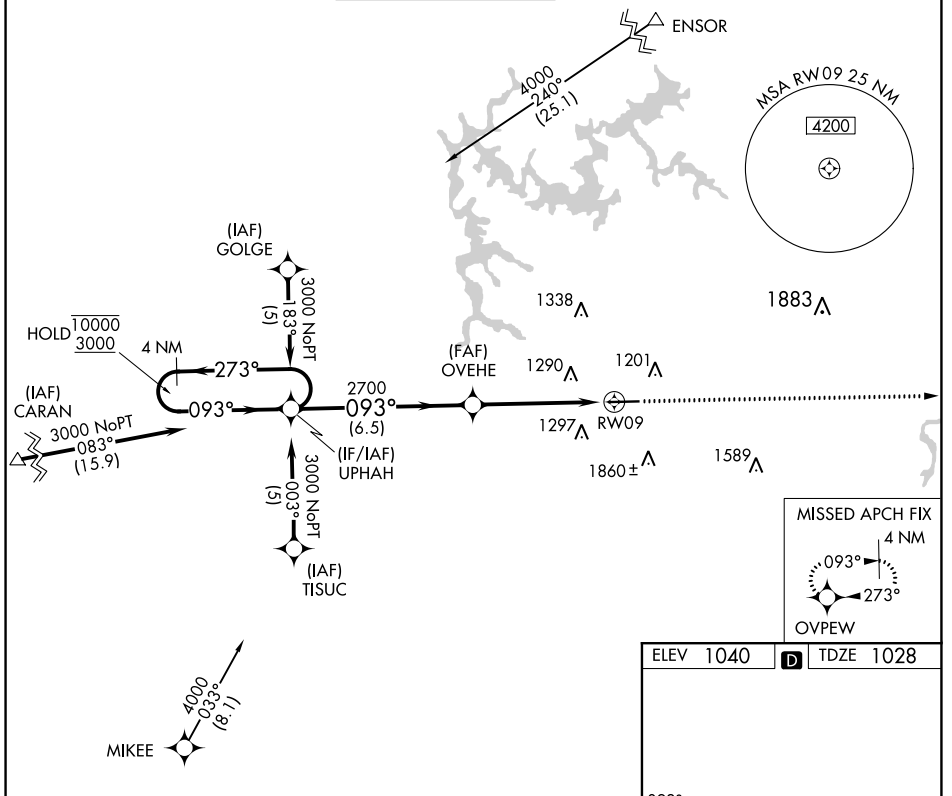
APP CRS 093°	Rwy Idg 5233
	TDZE 1028
	Apt Elev 1040

RNAV (GPS) RWY 9

COBB COUNTY INTL-MCCOLLUM FLD (RYY)

RNP APCH.	MISSED APPROACH: Climb to 3100 direct OVPEW and hold.
<p>⚠ Rwy 9 helicopter visibility reduction below 1 SM NA.</p> <p>⚠ Straight-in Rwy 9 NA at night, Circling Rwy 9 NA at night.</p>	

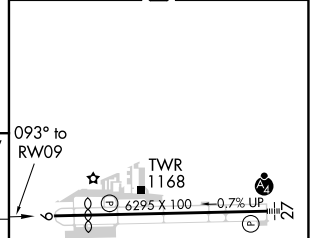
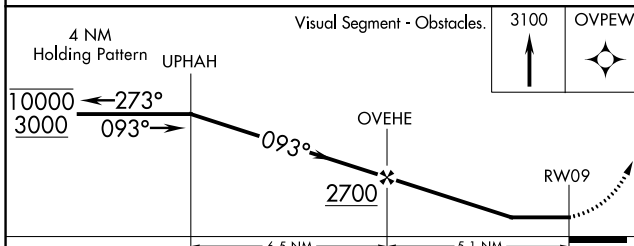
ATIS 128.125	ATLANTA APP CON 121.0 268.7	MCCOLLUM TOWER ★ 125.9 (CTAF) 0	GND CON 119.0	CLNC DEL 119.0 268.7	UNICOM 122.7
------------------------	---------------------------------------	---	-------------------------	--------------------------------	------------------------



SE-4, 09 SEP 2021 to 07 OCT 2021

SE-4, 09 SEP 2021 to 07 OCT 2021

ELEV 1040	TDZE 1028
-----------	-----------



CATEGORY	A	B	C	D
LNVA MDA	1560-1	532 (600-1)	1560-1½	532 (600-1½)
CIRCLING	1780-1	740 (800-1)	1780-2 740 (800-2)	2220-3 1180 (1200-3)

HIRL Rwy 9-27