

VORTAC CVG <b>117.3</b> Chan <b>120</b>	APP CRS <b>171°</b>	Rwy Idg TDZE Apt Elev	<b>2589</b> <b>584</b> <b>584</b>
---	------------------------	-----------------------------	---

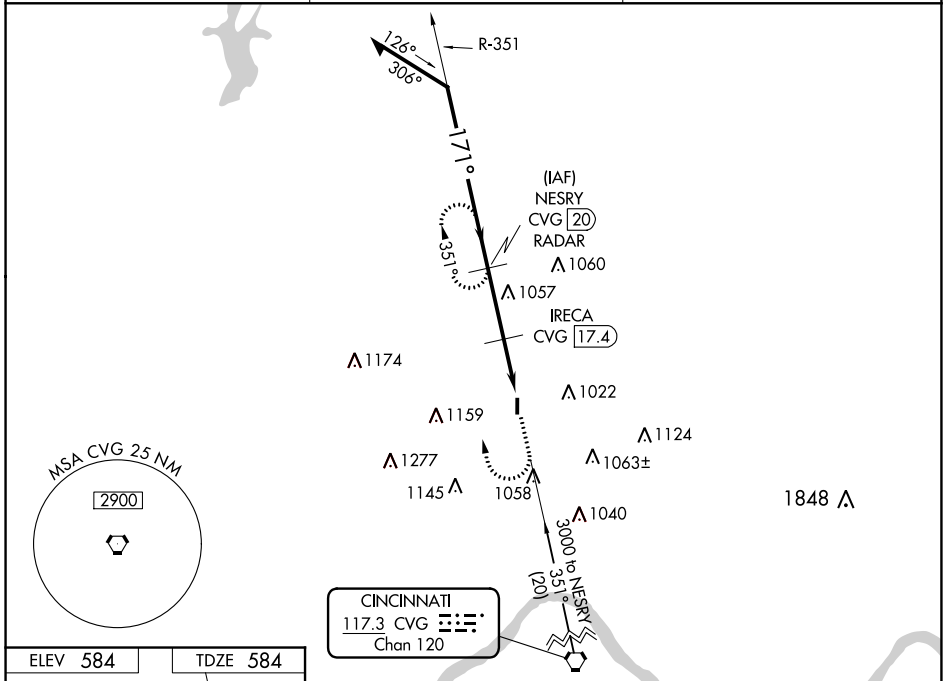
# VOR RWY 19

## CINCINNATI WEST (I67)

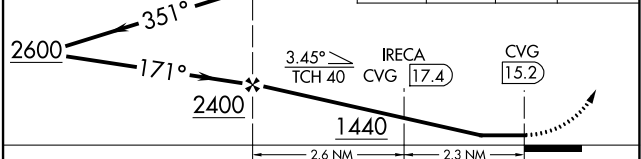
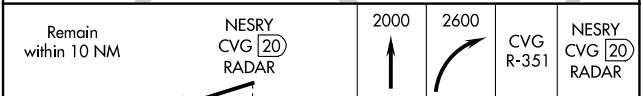
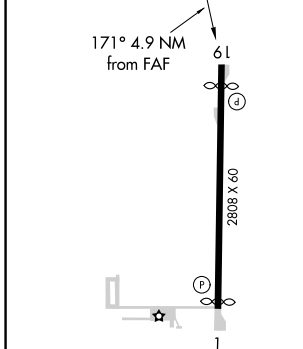
**▼** DME or RADAR required. Use Butler Co Rgnl-Hogan Field altimeter setting, when not received, use Cincinnati/Northern Kentucky Intl altimeter setting and increase all MDA 40 feet, and S-19 Cat A visibility ¼ mile. Procedure NA at night. Rwy 1, 19 helicopter visibility reduction below 1 SM NA.

**▲ NA** MISSED APPROACH: Climb to 2000, then climbing right turn to 2600 via CVG VORTAC R-351 to NESRY/ CVG 20 DME/RADAR and hold.

AWOS-3PT <b>118.15</b>	CINCINNATI APP CON <b>128.7 254.25</b>	UNICOM <b>123.0 (CTAF) 0</b>
---------------------------	---	---------------------------------



ELEV 584	TDZE 584
----------	----------



CATEGORY	A	B	C	D
S-19	1440-1 856 (900-1)	1440-1¼ 856 (900-1¼)		NA
CIRCLING	1440-1 856 (900-1)	1440-1¼ 856 (900-1¼)		NA
IRECA FIX MINIMUMS				
S-19	1340-1 756 (800-1)	1340-1¼ 756 (800-1¼)		NA
CIRCLING	1340-1 756 (800-1)	1340-1¼ 756 (800-1¼)		NA

MIRL Rwy 1-19 0

FAF to MAP 4.9 NM

Knots	60	90	120	150	180
Min:Sec	4:54	3:16	2:27	1:58	1:38

EC-2, 09 SEP 2021 to 07 OCT 2021

EC-2, 09 SEP 2021 to 07 OCT 2021