

WAAS CH <b>63133</b> <b>W09A</b>	APP CRS <b>088°</b>	Rwy Idg <b>3599</b> TDZE <b>1483</b> Apt Elev <b>1483</b>
--	------------------------	---

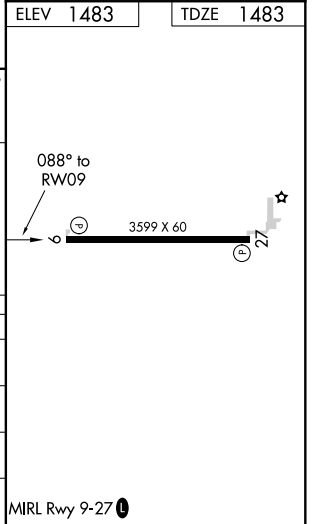
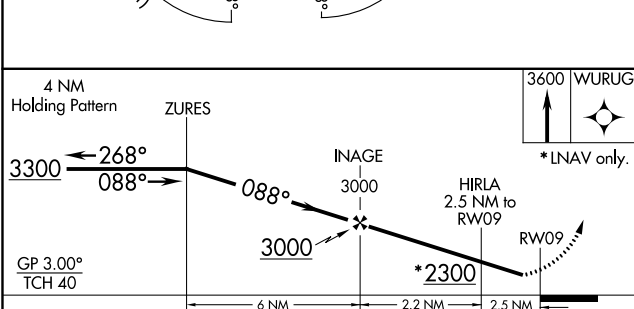
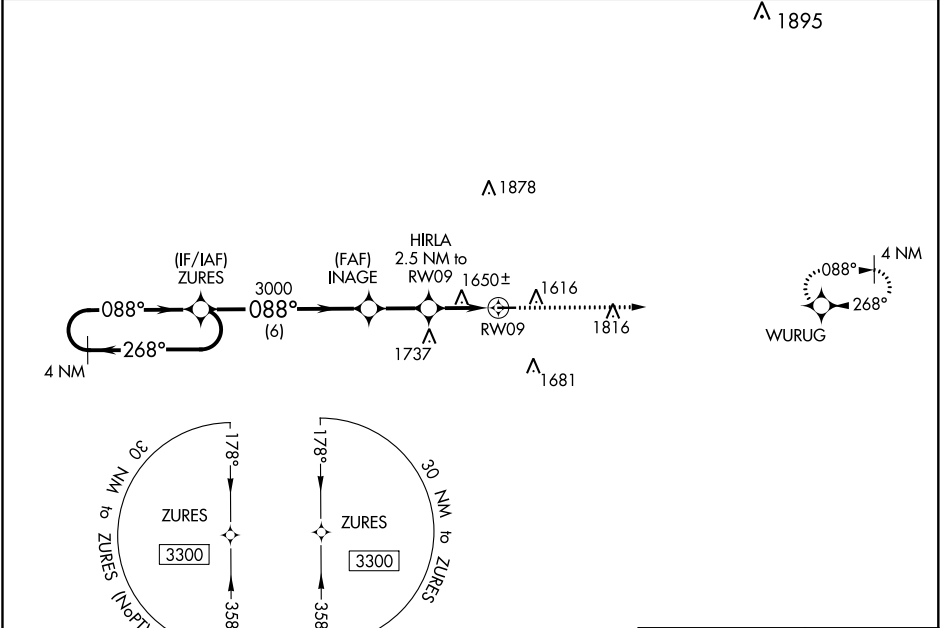
# RNAV (GPS) RWY 9

CASSVILLE MUNI (94K)

**⚠** Baro-VNAV NA. DME/DME RNP-0.3 NA. Helicopter visibility reduction below 1 SM NA. Procedure NA at night. Use Monett altimeter setting, when not received, use Rogers altimeter setting and increase all DA 13 feet and all MDA 20 feet and LNAV/VNAV all Cats visibility to 1 $\frac{1}{2}$  mile.

**⚠** NA MISSED APPROACH: Climb to 3600 direct WURUG and hold.

HFJ AWOS-3 <b>118.275</b>	SPRINGFIELD APP CON <b>124.95 318.2</b>	CTAF <b>122.9</b>
------------------------------	--	----------------------



CATEGORY	A	B	C	D
LPV DA	1843-1 $\frac{1}{4}$	360 (400-1 $\frac{1}{4}$ )		NA
LNAV/VNAV DA	1998-1 $\frac{3}{4}$	515 (600-1 $\frac{3}{4}$ )		NA
LNAV MDA	1960-1	477 (500-1)	1960-1 $\frac{3}{8}$ 477 (500-1 $\frac{3}{8}$ )	NA
<b>C</b> CIRCLING	2000-1 517 (600-1)	2020-1 537 (600-1)	2160-2 677 (700-2)	NA

NC-3, 09 SEP 2021 to 07 OCT 2021

NC-3, 09 SEP 2021 to 07 OCT 2021